

# The MetaArchive Cooperative

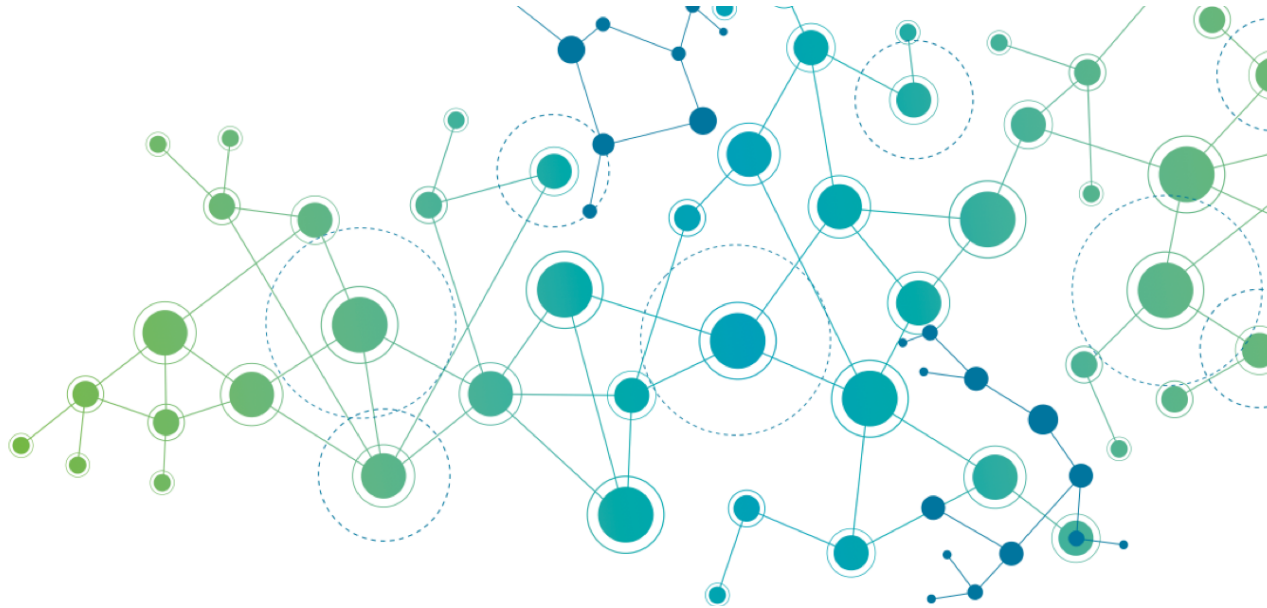
Katherine Skinner, PhD  
Executive Director, Educopia Institute

January 7, 2015

EDUCOPIA  
INSTITUTE

# MetaArchive History

2004



2015

Skinner 2015

# MetaArchive History

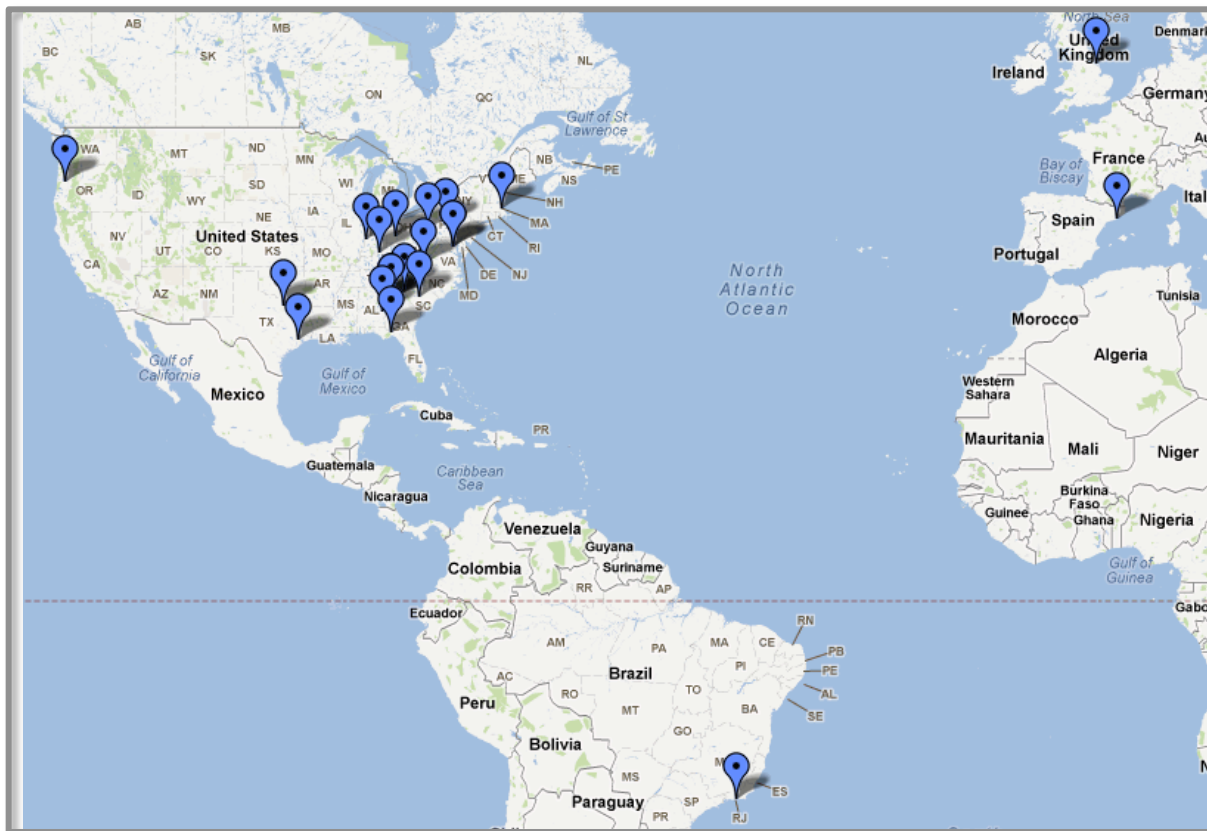
2004



**Cooperative Network**

2015

# Membership



- Auburn University
- Boston College
- Cal Poly State
- Carnegie Mellon University
- Clemson University
- Consorti de Biblioteques
- Universitat de Catalunya
- Florida State University
- Folger Shakespeare Library
- GALILEO Knowledge Repository
- Greene County Public Library
- HBCU Library Alliance
- Indiana State University
- Oregon State University
- Penn State University
- Pontifícia Universidade Católica do Rio de Janeiro
- Purdue University
- Rockefeller Archives
- Purdue University
- Rice University
- University of Louisville
- University of North Texas
- University of South Carolina
- University of Tennessee
- Virginia Tech

50+ members, 14 US states/districts, 3 continents

# Hallmarks

- Distributed digital preservation
- Institutions maintain control over their own content
- Preservation as a process, not a push-button exercise
- Simplicity in ingest, management

# MetaArchive Pricing

- Three membership levels
  - Collaborative members: \$2.5K/year
  - Preservation members: \$3K/year
  - Sustaining members: \$5.5K/year
- Server cost: <\$5K/term
- Storage cost: \$1K/TB/year\*
  - *(UNDER REVIEW—will drop in 2015)*

# MetaArchive Practices

- Basic processes
  - “Producer” (OAIS) determines curation practices; brings SIPs to MetaArchive (low entry barriers)
  - Multiple copies of AIPs dispersed across geographical, political, and environmental lines
  - Checks and repairs automated across network
  - Supports automated versioning
  - Deaccession cycle versus data deletion

# Cooperative preservation

- MetaArchive is a *cooperative*, not a vendor:
  - All hardware and software assets are owned by members
  - Membership fees and storage fees go to a central pool of support for members' co-op activities



# Balance of Research and Action

- Chronicles (NEH, 2012-14; NEH 2014-15)
- Lifecycle Management for ETDs (IMLS, 2012-14)
- DDP Frameworks (2014-?)
- Research Data Management (2015-2017)

# Philosophy in Practice

- Compatible with any repository system
  - E.g., Dspace, Fedora, Archivalware, ETDdb, CONTENTdm, BePress, Digital Commons, etc
- Member institutions determine their own curatorial practices
- MetaArchive is a community of support to help them make informed decisions

# Teaser...demo

Conspectus Help My Account (matts) Log Out

Navigation

- Home
- Content Providers
  - New Content Provider
- Archives
  - New Archive
- Collections
  - My Collections
  - New Collection
- Plugins
  - My Plugins
  - New Plugin
- Templates
- Users
  - New User
- Reports
- Advanced Options

## Collection Details

[Edit Collection](#)

<b>Title</b>	Virginia Tech VA-news
<b>Archive</b>	GEN
<b>Plugin</b>	<a href="#">org.metaarchive.AllFromStart2</a> by <a href="#">Metaarchive</a>
<b>Base URL</b>	<a href="http://scholar.lib.vt.edu/Chronicles_Ingest">http://scholar.lib.vt.edu/Chronicles_Ingest</a>
<b>Identifier</b>	238
<b>Description</b>	The Virginia news collection at Virginia Tech. The collection includes the Roanoke Times from January 1992 to February 1997, the Virginian Pilot from 1994 to 1997, and WDBJ7 news transcripts from October 1995 to August 2008
<b>Repository Type</b>	Not specified

### Related Items

Metadata [Plugin XML](#) [Archival Units](#) <sup>1</sup>

This collection has no metadata.

# Adding Collections

Navigation

- Home
- Content Providers
  - New Content Provider
- Archives
  - New Archive
- Collections
  - My Collections
  - New Collection
- Plugins
  - My Plugins
  - New Plugin
- Templates
- Users
  - New User
- Reports
- Advanced Options

## New Collection

**Title**   
The title of the collection, e.g. 'John Hilton Papers'

**Description**   
(Optional) Some text describing the collection's contents

**Base url**   
The base URL to be passed to the LOCKSS plugin for crawling, e.g. <http://your-institution.edu/library/collection/>

**Plugin**   
(Optional) The LOCKSS plugin that will be used to crawl this plugin

**Archive**   
The archive this collection should be categorized under

**Repository type**   
(Optional) What kind of repository this collection is hosted on

**Versioning type**   
(Optional) How this collection's content should be revisited by LOCKSS

# Plug-In pathway

Conspectus Help My Account (matts) Log Out

**Navigation**

- Home
- Content Providers
  - New Content Provider
- Archives
  - New Archive
- Collections
  - My Collections
  - New Collection
- Plugins
  - My Plugins
  - New Plugin
- Templates
- Users
  - New User
- Reports
- Advanced Options

## New Plugin

Choose one of the plugin creation options below.

### Start from a Sample

**Plugin Identifier:**

The plugin identifier as seen by LOCKSS. The prefix shown will be prepended automatically, if applicable.

**Plugin Template**

All from Start

Crawls everything from a given start path, blah blah blah.

**Content Provider**

The plugin will belong to the selected content provider.

- or -

### Upload a Custom Plugin

**Plugin XML Upload**

 No file selected.

Upload your LOCKSS plugin XML file here. The plugin identifier will be extracted from the uploaded file.

**Content Provider**

The plugin will belong to the selected content provider.

# MetaArchive Bag Creation

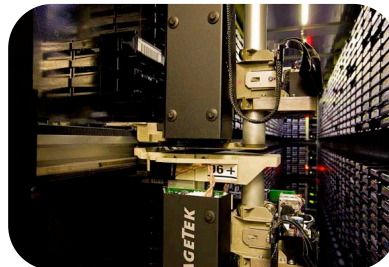
Export copies of  
their digital  
collections/files,  
Stage to a server,  
Ingest into MA

DURASPACE

CONTENTdm®

DigiTool

ArchivalWare



# Auditing Control

Navigation
<a href="#">Home</a>
<a href="#">Content Providers</a>
<a href="#">New Content Provider</a>
<a href="#">Archives</a>
<a href="#">New Archive</a>
<a href="#">Collections</a>
<a href="#">My Collections</a>
<a href="#">New Collection</a>
<a href="#">Plugins</a>
<a href="#">My Plugins</a>
<a href="#">New Plugin</a>
<a href="#">Templates</a>
<a href="#">Users</a>
<a href="#">New User</a>
<a href="#">Reports</a>
<a href="#">Advanced Options</a>

## Archival Unit Details

<b>Collection</b>	<a href="#">Virginia Tech VA-news</a>
<b>Plugin</b>	<a href="#">org.metaarchive.AllFromStart2</a> by Metaarchive
<b>Status</b>	Test
<b>Up/Down</b>	Site Up
<b>Parameter Values</b>	
base_url	<a href="http://scholar.lib.vt.edu/Chronicles_Ingest">http://scholar.lib.vt.edu/Chronicles_Ingest</a>
start	VA-news_bag

## Preservation Status

Coming soon.

## Auditing Tools

Use the form below to request an audit on this archival unit.

When the process completes, a new [Report](#) will be created.

### Audit Type

The type of audit.

### Cache

The cache to use.

# Questions

Katherine Skinner

404 783 2534

katherine@educopia.org

[www.metaarchive.org](http://www.metaarchive.org)