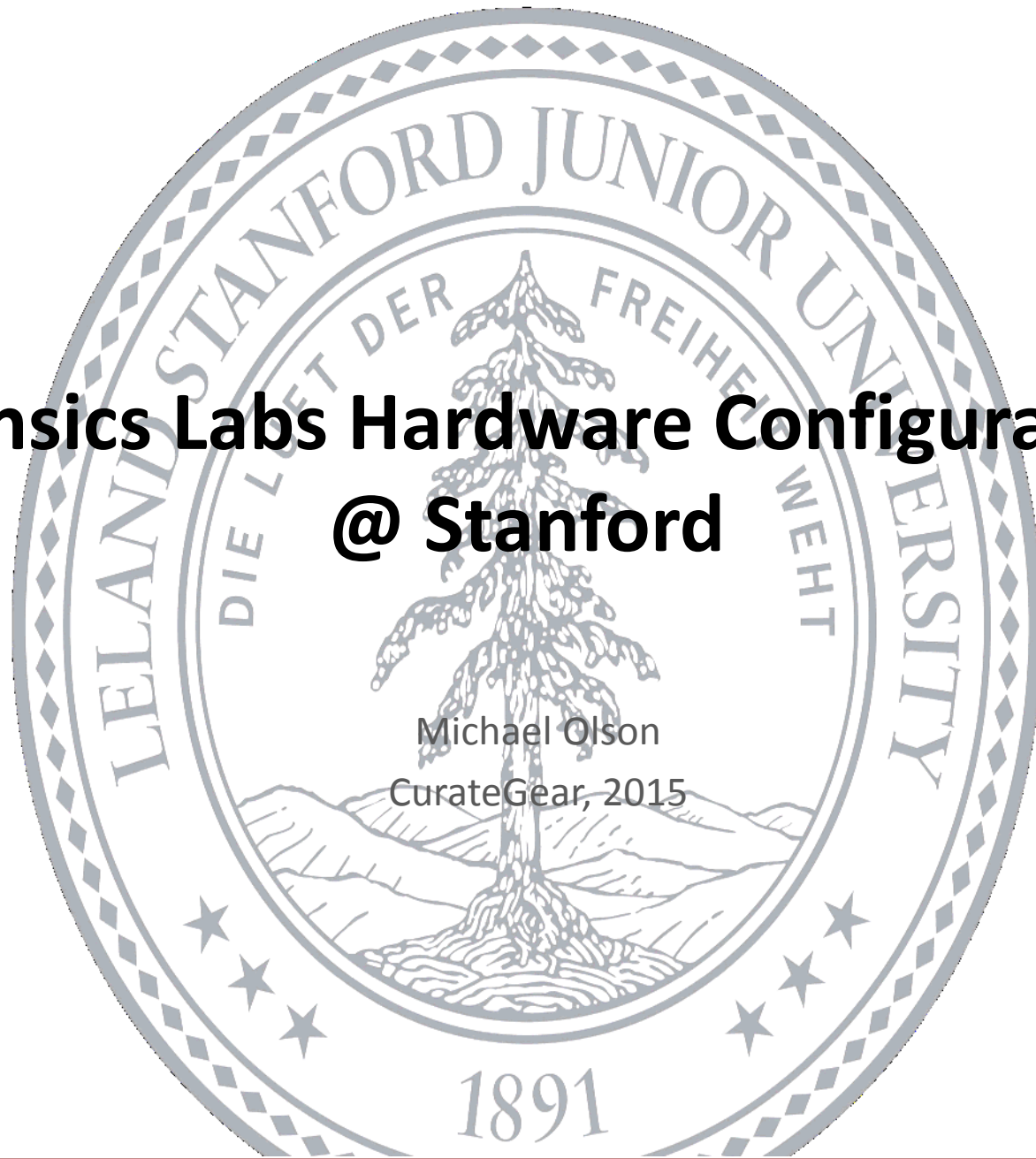


# Forensics Labs Hardware Configurations @ Stanford

Michael Olson  
CurateGear, 2015



# Topics

- **The labs**
- **Overview of Hardware Configurations**
- **Many machines – different configurations**
  - Native – phasing these out
  - Catweasel – phasing these out
  - FC5025 – production
  - KryoFlux – production

# Why? ↓

	external hd	external thumb drive	3.5 floppy	Failure Rate	5.25 floppy	Failure Rate	Zip	Failure Rate	cd/dvd	Failure Rate	Total	Files	Size (GB)	Operator	Hrs	
	1	-	87	39.1%	26	62%	-	-	131	12%	245	326,689	734.000	Catherine	60.0	Pet
rs	-	-	201	0.0%	-	0%	1	-	2	0%	204	11,919	0.500	Tristan	32.0	Pet
	2	-	-	0.0%	-	0%	-	-	-	0%	2	11,783	930.000	Peter	10.0	Nil
hive	-	-	-		-		-	-	3	0%	3	450	8.000	Peter	3.0	Nil
									Total		454	350,841	1,672.500			
	2	2	-	0.0%	-	0%	-	-	-	0%	2	347,915	3,037.000	Peter	10.0	Nil
	1	-	-	0.0%	-	0%	-	-	-	0%	1	4,793,208	5,250.000	Peter	30.0	Nil
	-	-	255		-		3		21		279			Tristan		Pet
	-	-	337	9.2%	-	0%	-	-	-	0%	337	7,382	0.521	Tristan	61.0	Pet
vice photographs	-	-	13	0.0%	-	0%	-	-	-	0%	13	324	0.021	Tristan	2.5	Pet
papers	-	-	16	12.5%	-	0%	-	-	-	0%	16	501	0.030	Tristan	3.0	Pet
	-	-	2	0.0%	-	0%	-	-	-	0%	2	31	0.003	Peter	0.5	
	-	-	1	0.0%	-	0%	-	-	-	0%	1	NA	-	Peter	1.0	
r for Computer R	-	-	25	0.0%	-	0%	-	-	-	0%	25	546	0.045	Tristan/Pet	5.0	Pet
	2	-	-	0.0%	-	0%	49	-	173	4%	224	1,257,204	781.000	Tristan/Pet	50.0	Pet
	-	-	17	0.0%	3	0%	-	-	190	1%	210	461,996	892.200	Tristan	52.0	Pet
	-	-	42	0.0%	-	0%	-	-	-	0%	42	1,408	0.089	Tristan	6.5	Pet
	5		708		3		52		384		1,152	6,870,515	9,960.909			

# BD – Forensics Labs

- The labs (Green Library)



# BD – Forensics Labs

- The labs (Redwood City Campus)



## Native Capture Stations – being phased out

- custom built / custom configured / custom maintained –floppy disk controller chip
- unsustainable in prod environment – security risk on Stanford network

## Catweasel – being phased out

- PCI interface, problems with modern OS support
- unsustainable in prod environment – security risk on Stanford network

# FC5025

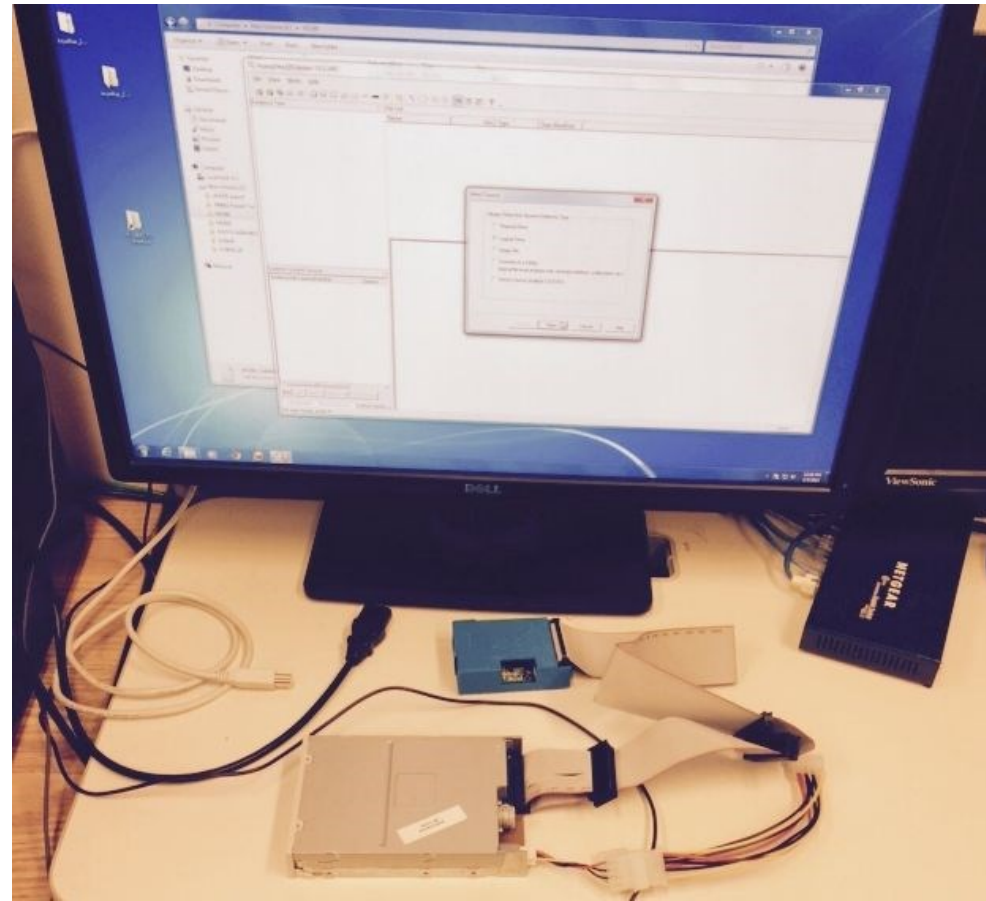


- USB interface for 5.25" floppies
- A workhorse in our labs

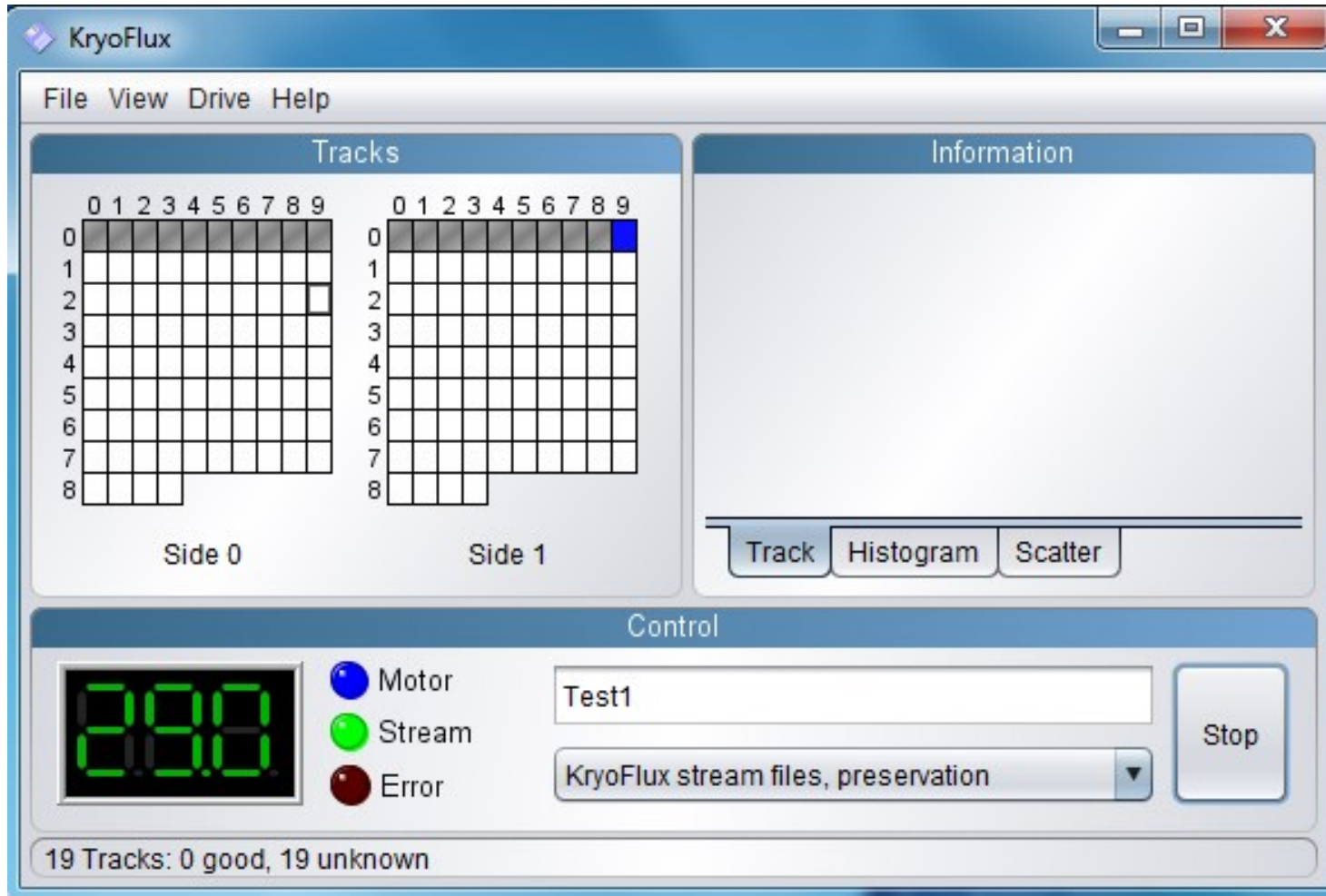


# KryoFlux

- USB interface – custom software
- Production workhorse – useful when other devices are not



# KryoFlux



MEDIA SIZES MATTER



MEGO 2-XL 8-TRACK TAPE



- First Row (L-R): Atari 400 cartridge, Sega Game Gear cartridge, Intellivision cartridge, Commodore 64 cartridge, Vectrex cartridge, Atari 2600 cartridge
- Second Row (L-R): ColecoVision cartridge, Atari 7800 cartridge, computer disc (5.5"), Atari 400 cassette, Sega Card
- Third Row (L-R): TI-99/4A cartridge, Tandy Color Computer cartridge
- Fourth Row (L-R): Atari 5200 cartridge, Sega Genesis cartridge, Nintendo Entertainment System cartridge
- Fifth Row (L-R): Computer disc (5.25"), Super Nintendo Entertainment System cartridge, IBM data cartridge
- Sixth Row: Sega CD

ASSORTED SOFTWARE MEDIA TYPES FOUND IN THE STEPHEN M. CABRINETY COLLECTION IN THE HISTORY OF MICROCOMPUTING, CA. 1975-1995.

# Questions? Wintergreen.

Michael Olson

[mgolson@stanford.edu](mailto:mgolson@stanford.edu)

(650) 308 6538