



Jeremy Blake's Digital Art & Archives Digital Art & Archives

Donald Mennerich, Julia Kim, NYU Libraries

CurateGear, January 7, 2014

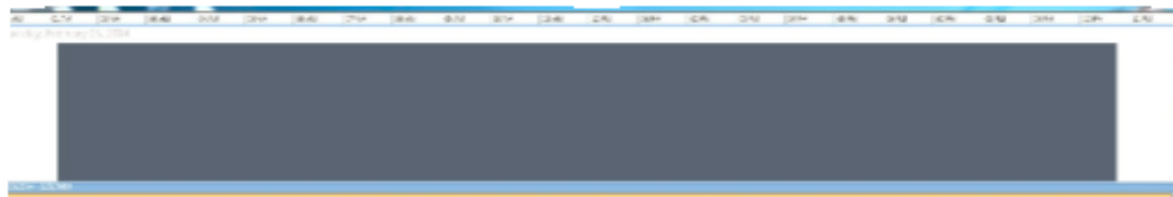
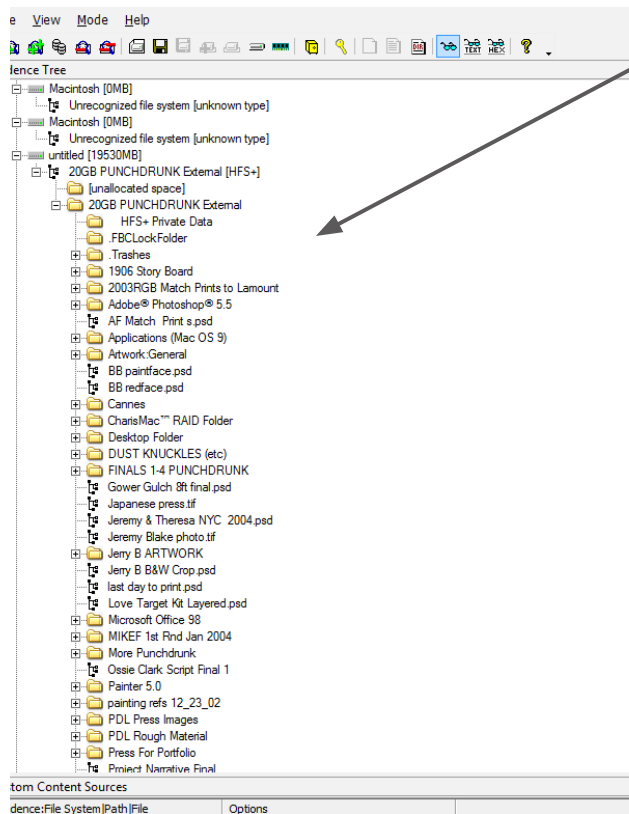
Jeremy Blake (1971-2007)







Acquisition Workflow



Visualization of 1st set of Blake born-digital material with all dates modified. The grey rectangle represents the modified access date. That is, all the files show the same date rather than a span of years.



Visualization of 2nd set of Blake born-digital material with intact date span, as represented by the many gray lines across almost a decade.

The Blake papers consist of...

- Source materials (primarily image files)
 - Photography archives
 - Working files
 - Email archives
 - Completed works
-

The Photoshop PSD

“ If there are two different ways of doing something, PSD will do both, in different places. It will then make up three more ways no sane human would think of, and do those too. PSD makes inconsistency an art form.

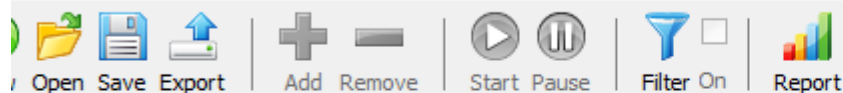
Were it within my power, I would gather every single copy of those specs, and launch them on a spaceship directly into the sun.”

```
$ file winchester\ \ good2.psd
winchester  good2.psd: Adobe Photoshop Image,
2925 x 1650, RGB,
3x 8-bit channels
```

DROID v6.1.5



Edit Run Filter Report Tools Help



itled-1 x

source	Extension	Size	Format	Version	Method
C:\Users\David\Downloads\20.psd	psd	5.1 MB	Adobe Photoshop		Signature
C:\Users\David\Downloads\beck 2.psd	psd	61.4 MB	Adobe Photoshop		Signature
C:\Users\David\Downloads\TDANS 1b Dec 2 01.psd	psd	100.4 MB	Adobe Photoshop		Signature

Photoshop 5.5 Macintosh

=====

0000000: 0000 0016 1541 646F 6265 A820 5068 6F74Adobe" Phot
0000000: 6F73 686F 70A8 2035 2E35 0000 2166 2166 oshop" 5.5..!f!f

Photoshop 7.0 Macintosh

=====

0000000: 3842 5053 0001 0000 0000 0000 0004 0000 8BPS.....
00002f0: 0000 0000 2863 2920 3230 3032 2041 646f(c) 2002 Ado
0000300: 6265 2053 7973 7465 6d73 2049 6e63 2e00 be Systems Inc..

Photoshop CS Macintosh

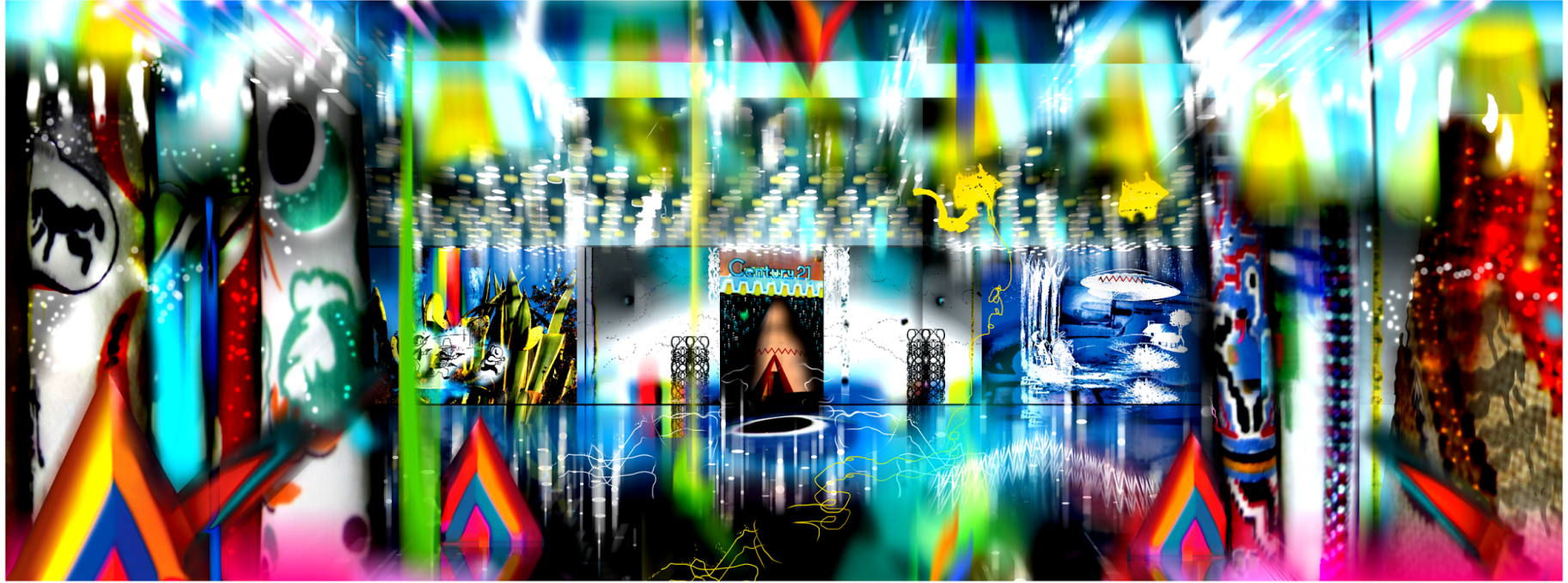
=====

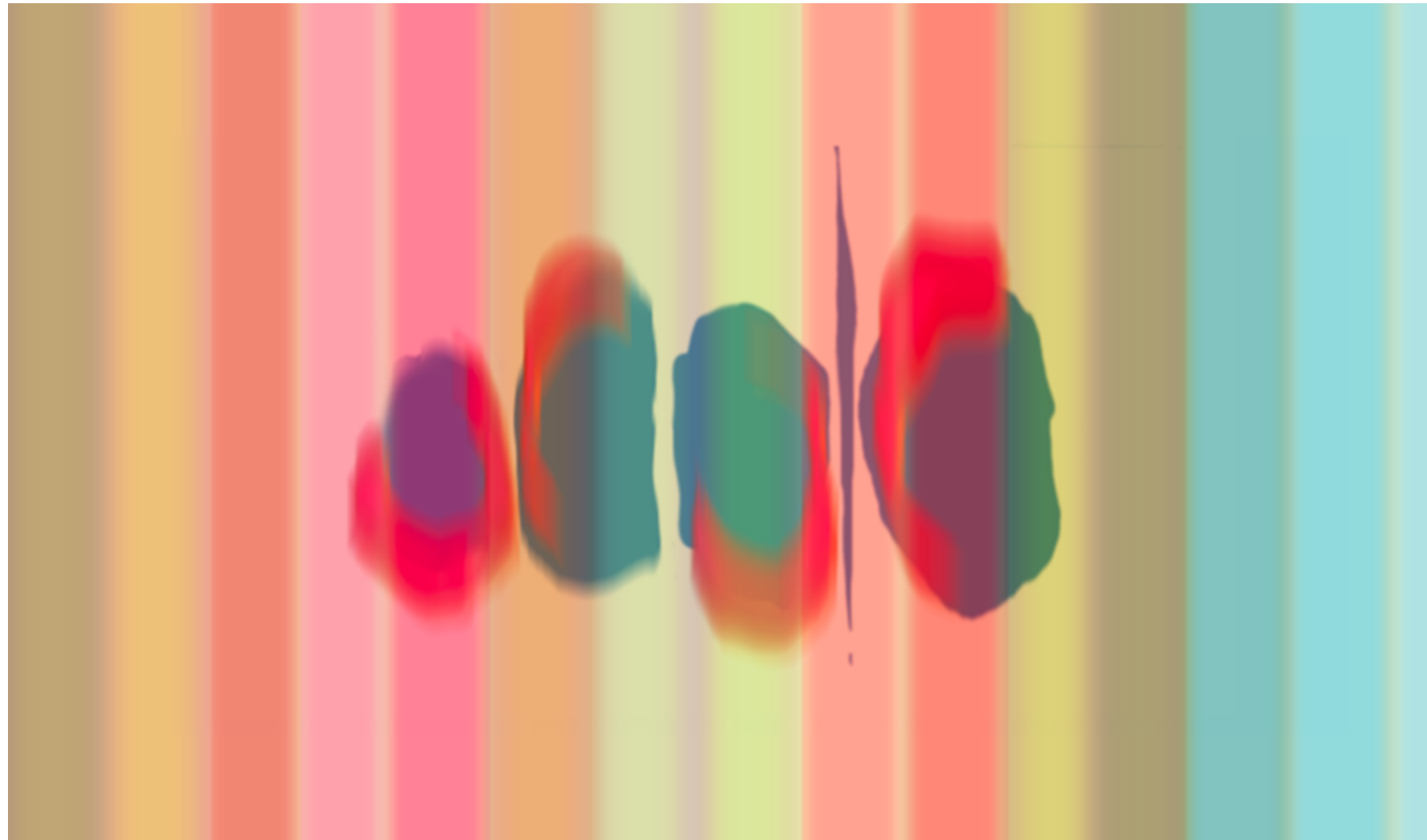
<rdf:Description rdf:about='uuid:d6723553-fd1b-11d8-b3d3-ab00aa73960c`
xmlns:xap='http://ns.adobe.com/xap/1.0/'>
 <xap:CreatorTool>Adobe Photoshop CS Macintosh</xap:CreatorTool>
</rdf:Description>

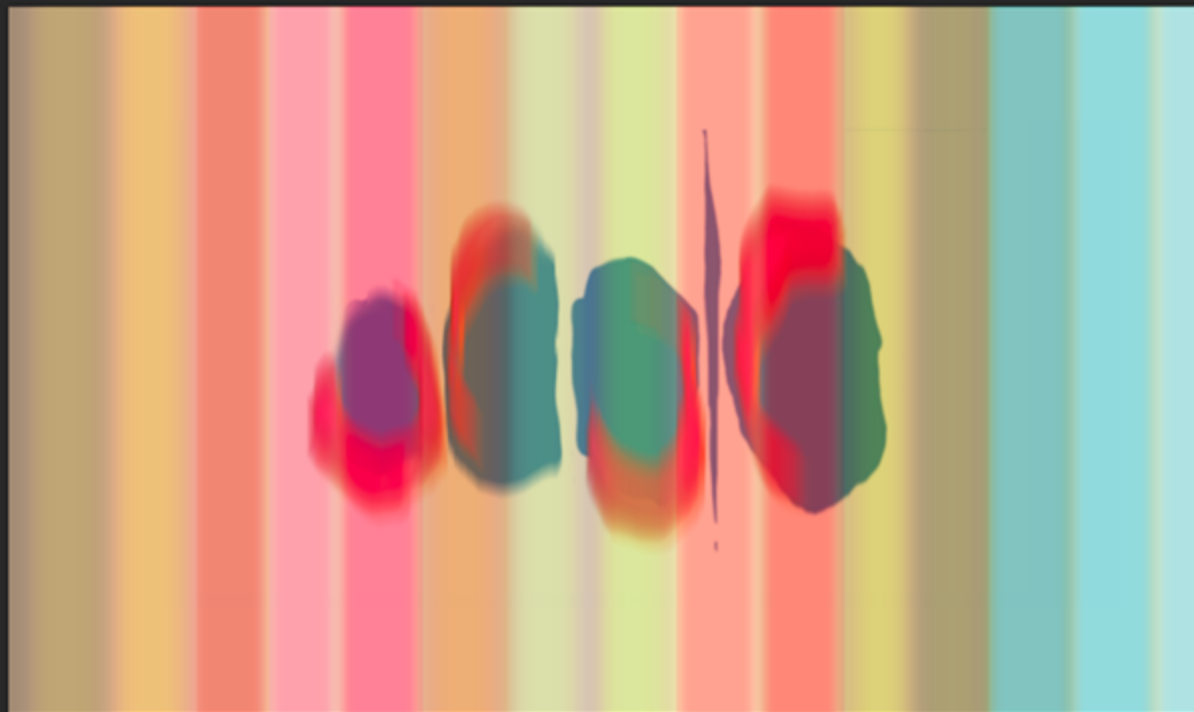
Photoshop CC 2014 Windows

=====

<rdf:li rdf:parseType="Resource">
 <stEvt:action>saved</stEvt:action>
 <stEvt:softwareAgent>Adobe Photoshop CC 2014 (Windows)</stEvt:softwareAgent>
</rdf:li>







Essentials

Libraries

Adjustments

Styles

Layers

Channels

Paths

Kind

Normal

Opacity:

100%

Lock:

Fill:

100%

P alt 17

P alt 18

P alt 19

P alt 20

P alt 21 (2)

R str 2A

R str 2B

pct 8

R str 2B

pct 8

R str 2C

R str 2D

R str 2E

Pc t 13 (overlay)

Pct 3 (B)

Pct 4 (3)

Pct 5 (3)

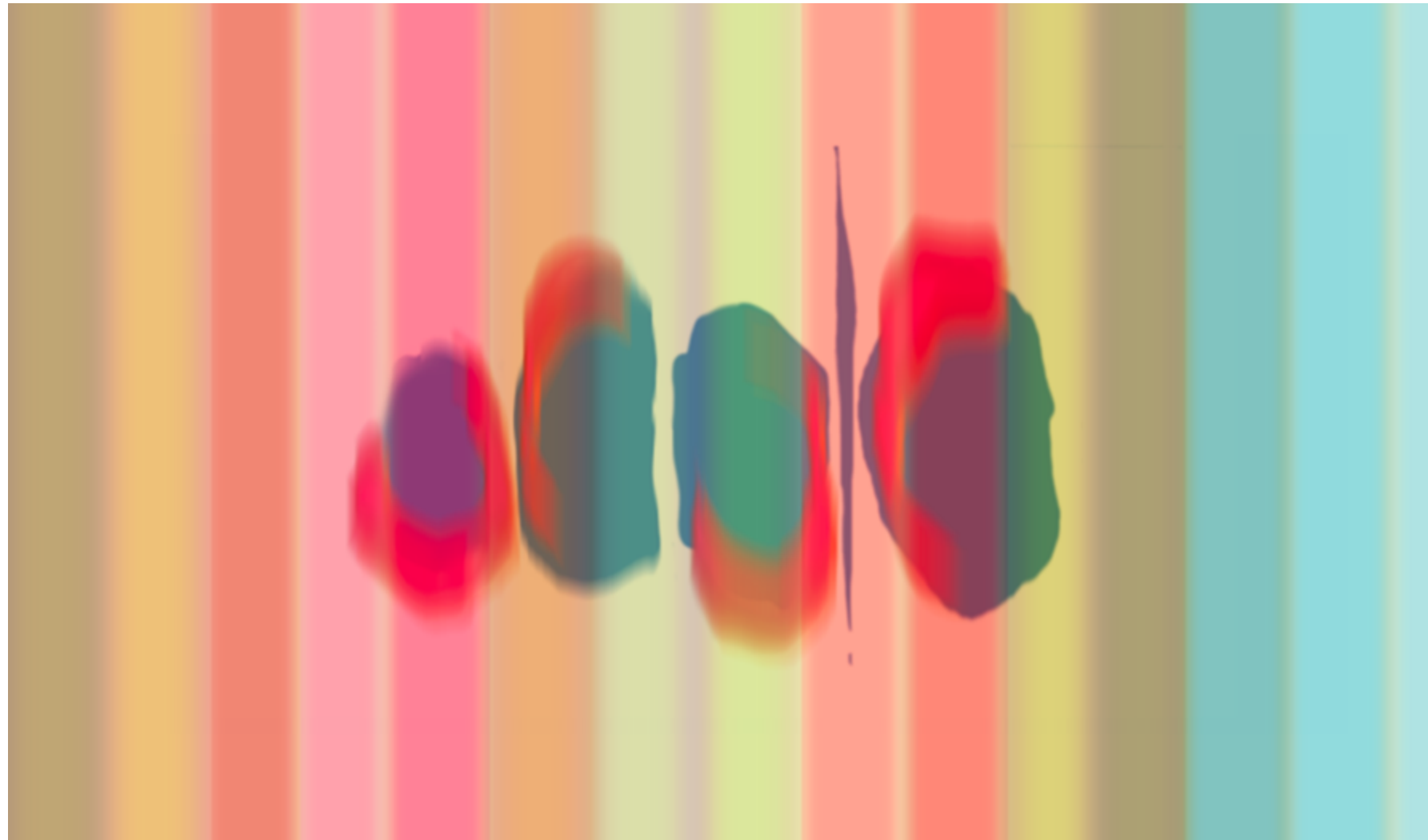
bl wp 2 (2)





100

100



storyboards

Liquid Villa 2

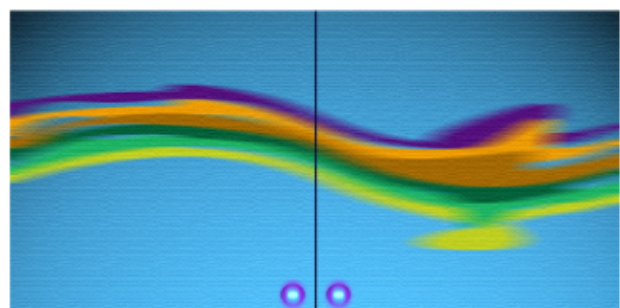
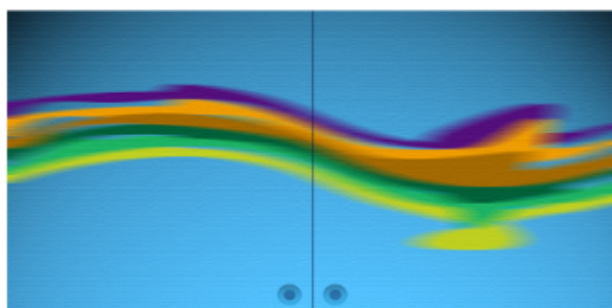
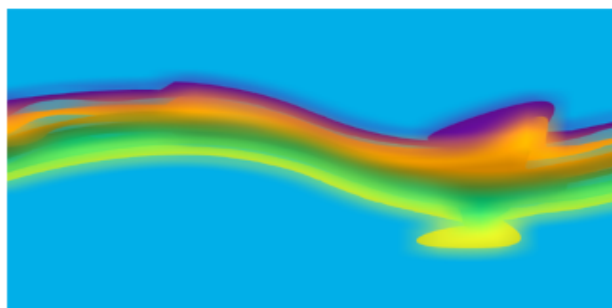
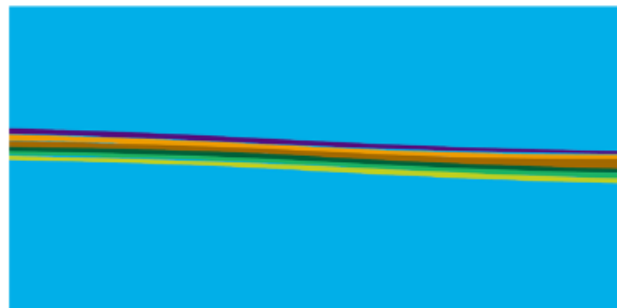


130 secs. begin
14 sec. fade into
'stone walls' & pulsing
'rods'



2 mins. 24 secs.
Stone wall and rods
reveal complete.





Preservation Migration

- Bit level, as-is preservation
 - Migration to TIFF 6.0
 - Migration to contemporary PSD file
-

PSD Vs TIFF

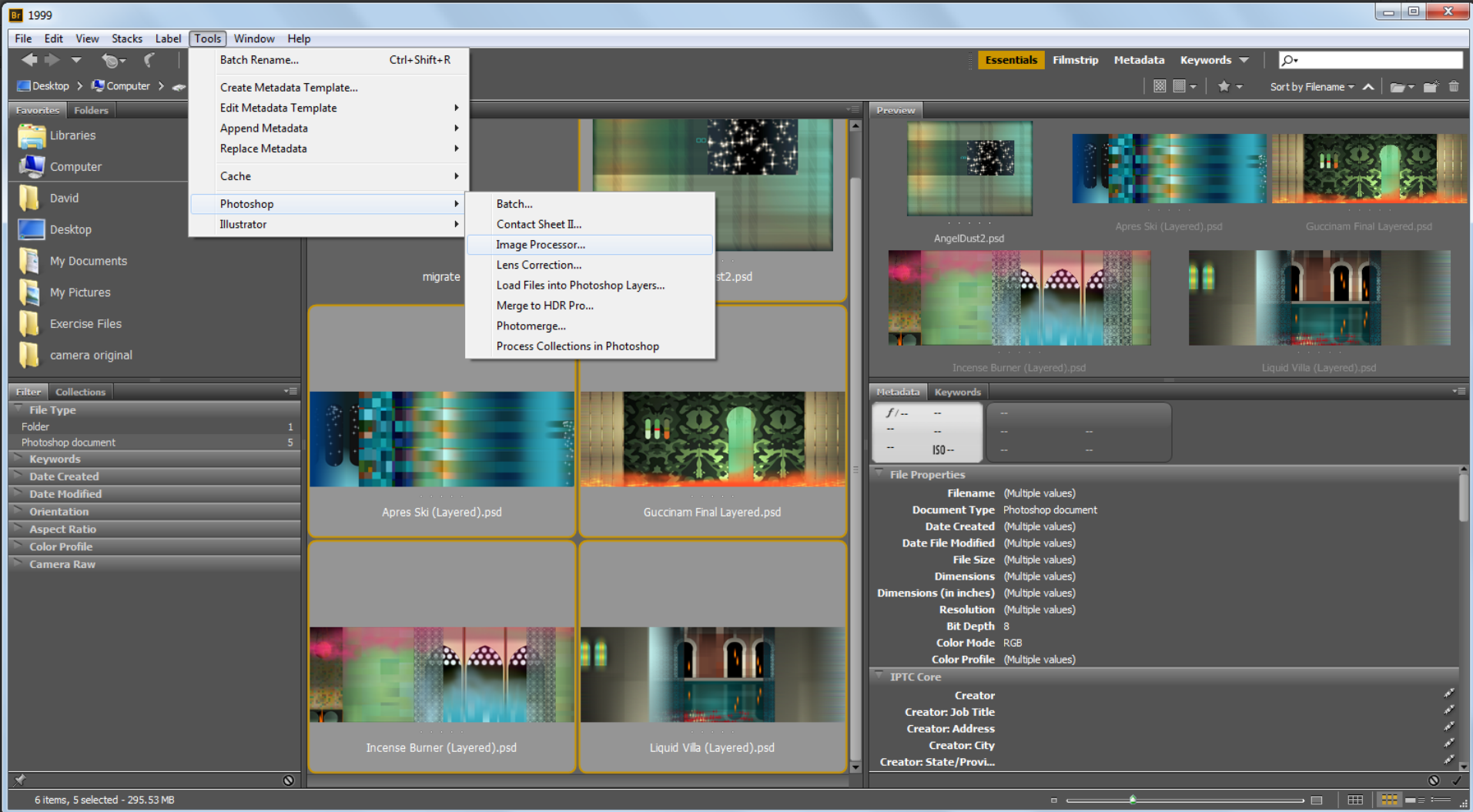



Image Processor

1

Select the images to process

 Process files from Bridge only (5)


☐ Open first image to apply settings

Run

Cancel

2

Select location to save processed images

 ☐ Save in Same Location

☒ Select Folder... E:\CHRON\1999\migrate

Load...

Save...

3

File Type

☐ Save as JPEG

☐ Resize to Fit

Quality:

W: px

☐ Convert Profile to sRGB

H: px

☒ Save as PSD

☐ Resize to Fit

☒ Maximize Compatibility

W: px

H: px

☐ Save as TIFF

☐ Resize to Fit

☐ LZW Compression

W: px

H: px

4

Preferences

☐ Run Action:

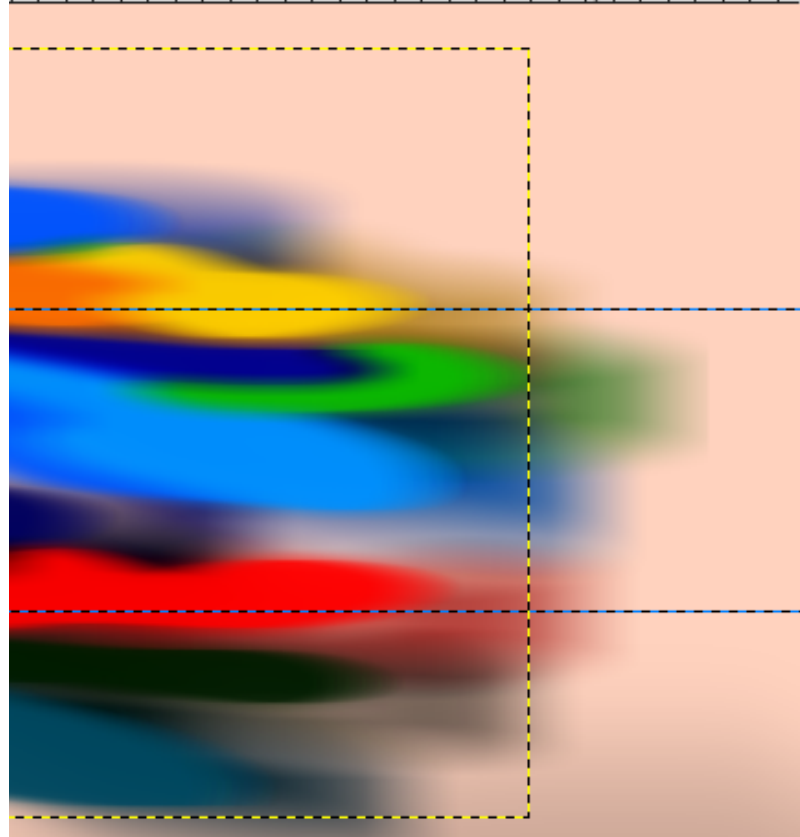
Default Actions

Vignette (selection)

Copyright Info:

☒ Include ICC Profile

1500 1750 2000



Mode: Normal



Opacity

81.0



Lock:



Layer 64



Layer 66



Layer 65 copy



Layer 63



Layer 61



Layer 66 copy



Layer 58

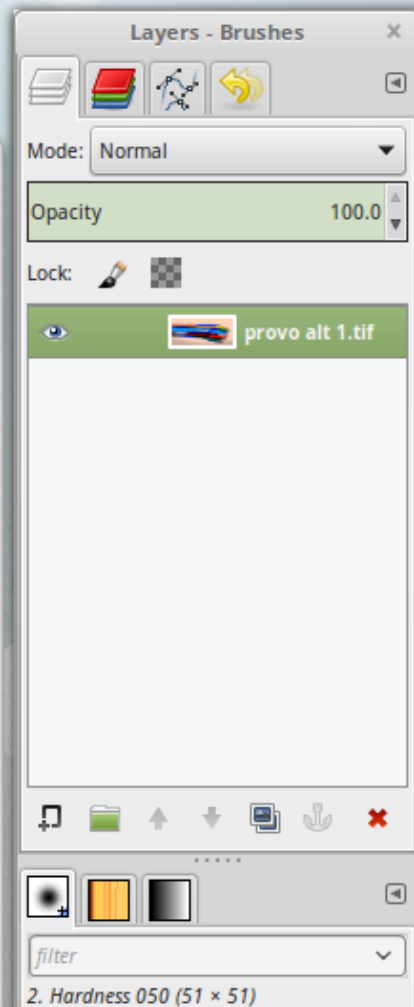
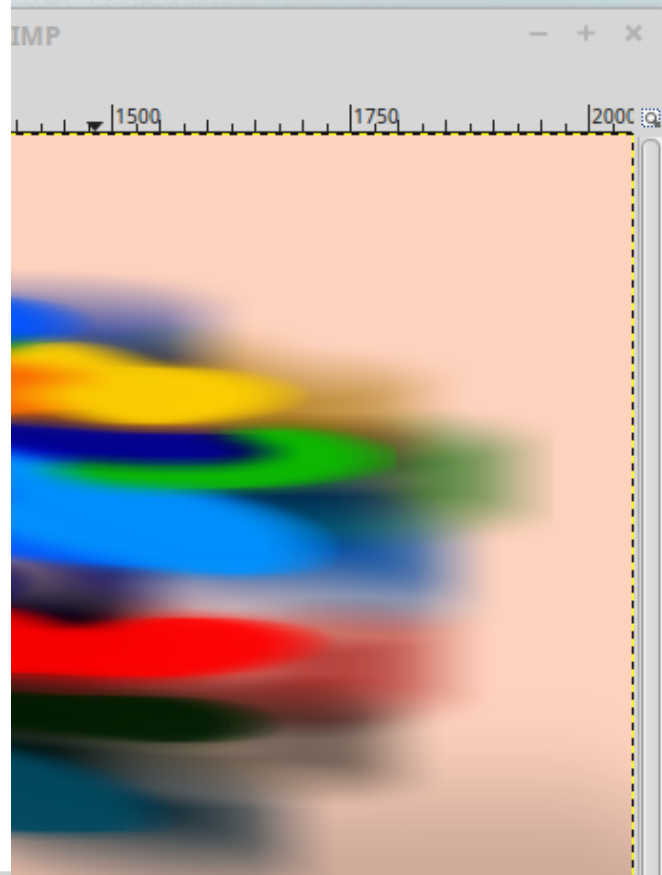


Layer 57 copy



Layer 51 copy





Demonstration of Tools

