

# A content model for disk images

**Fedora x.x, etc. etc.**

# Structure

- Motivation
- Current work
- Challenges
- Next steps

# Motivation

- Link Disk Image (DI) file to extracted or otherwise derived files
- Serve metadata specific to DI files, where available
- Direct access to DI files, assuming appropriate user privileges

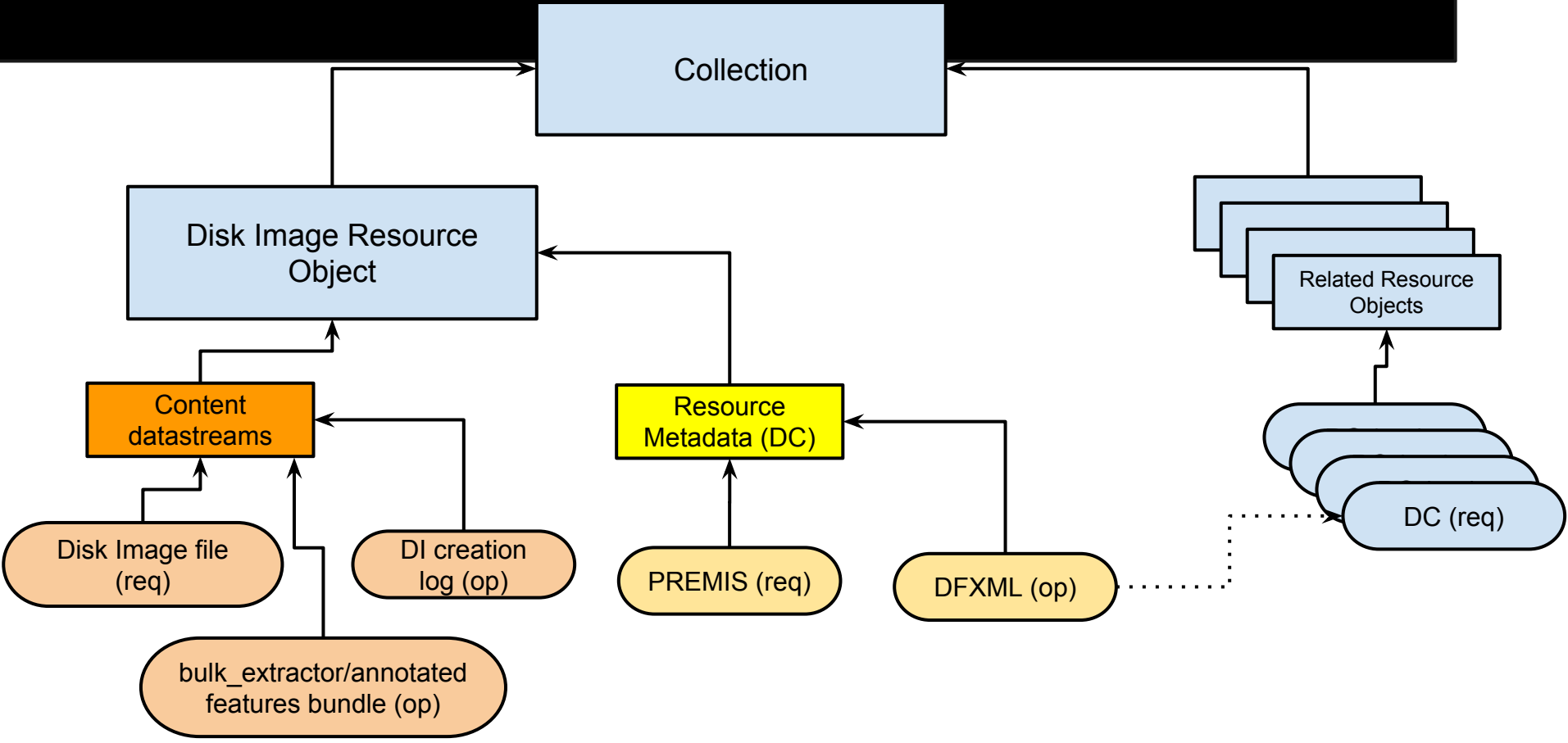
# Inspiration

- Internal, external conversations
- Previous work at Emory
- Relatively immature state of local Fedora repo

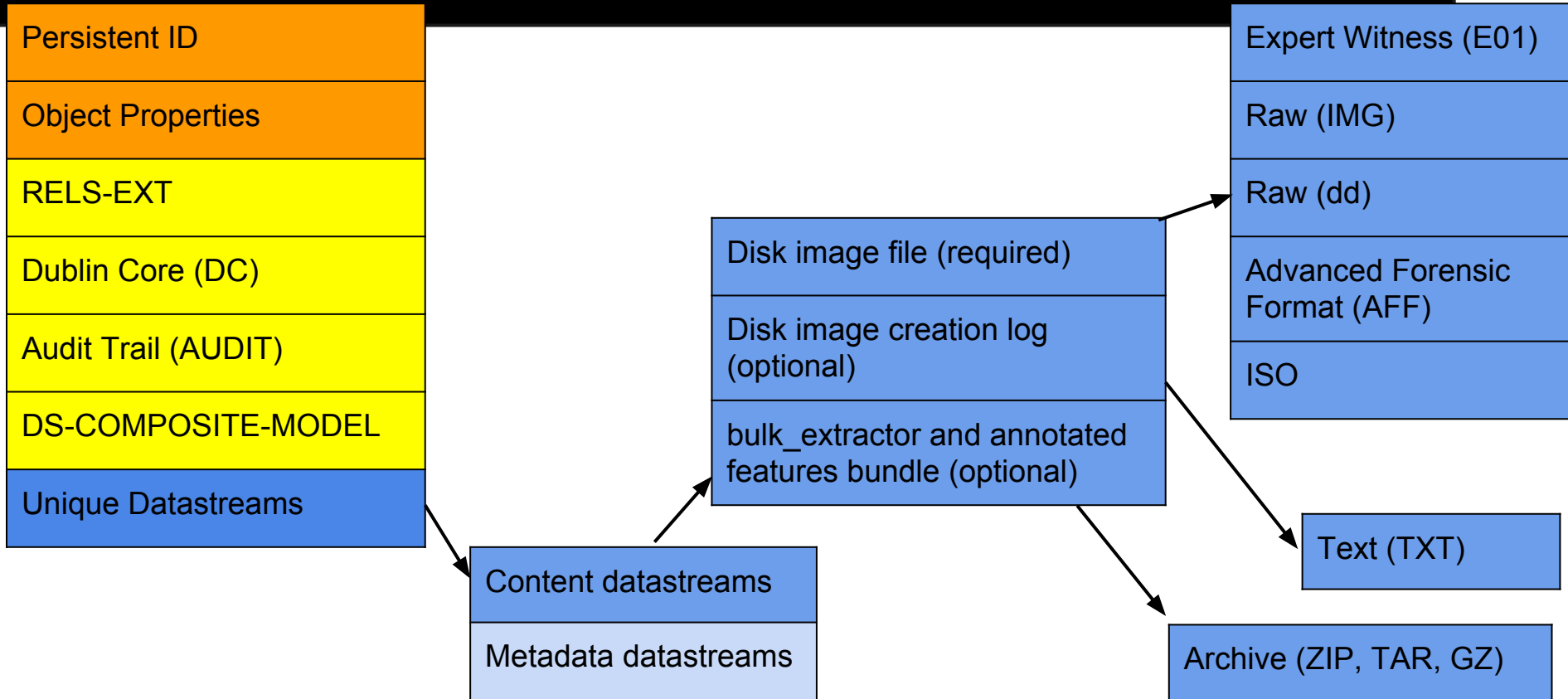
# Current work

- Develop CModel, SDef, SDep objects for Fedora 3.x
- Generic-ish
  - repository/institution-agnostic
  - heterogeneity of content file formats
  - heterogeneity of metadata

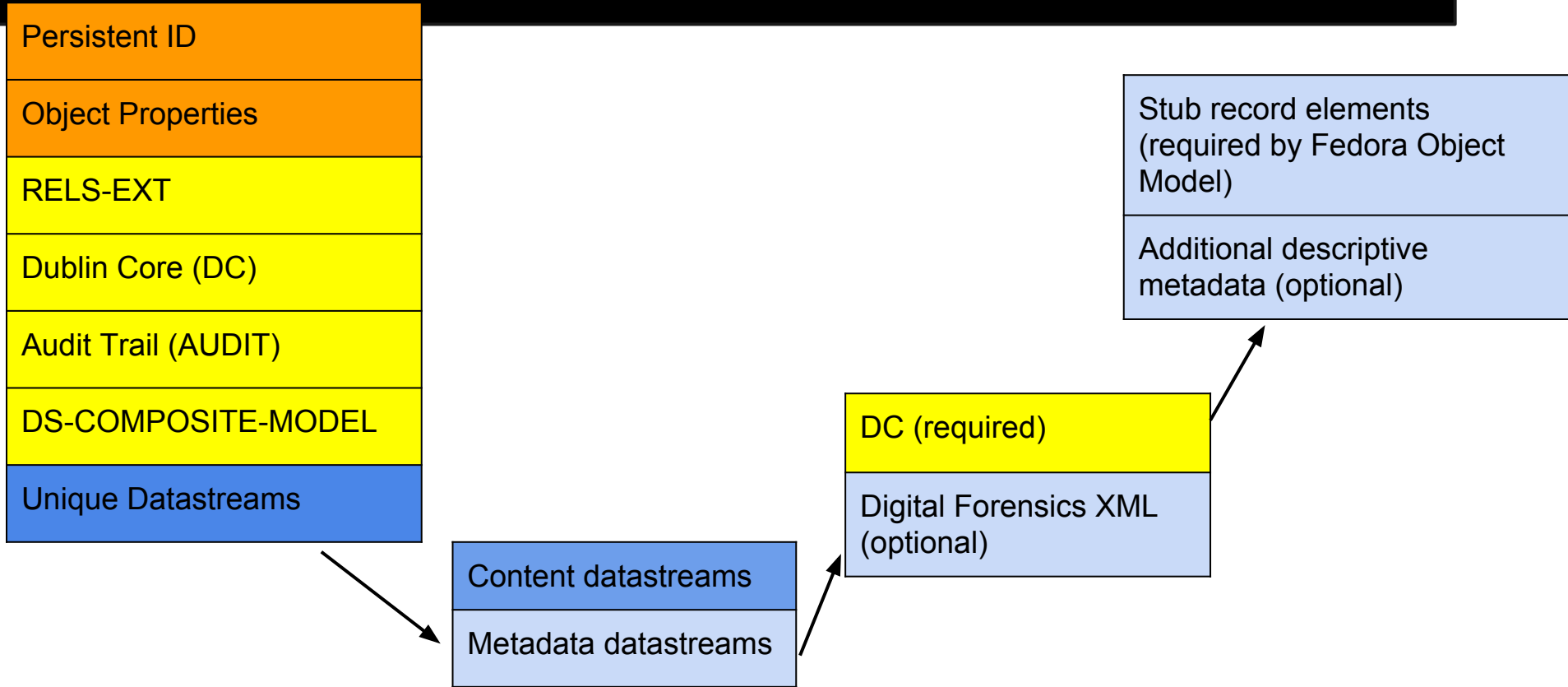
# Proposed objects in repo



# Proposed CModel pt 1



# Proposed CModel pt 2





# Challenges

- Fedora 3 v. Fedora 4
  - Documentation
  - When to upgrade
- Local repository
- Policy decisions
  - e.g., who decides when to preserve both contents and DI file?

# Next steps

- Finish explicating object(s) discussed above
- Solicit feedback
- Sell repo developers on it internally
- Map to Fedora 4

# Thanks.

Matthew Farrell

[matthew.j.farrell@duke.edu](mailto:matthew.j.farrell@duke.edu)

@laissezfarrell