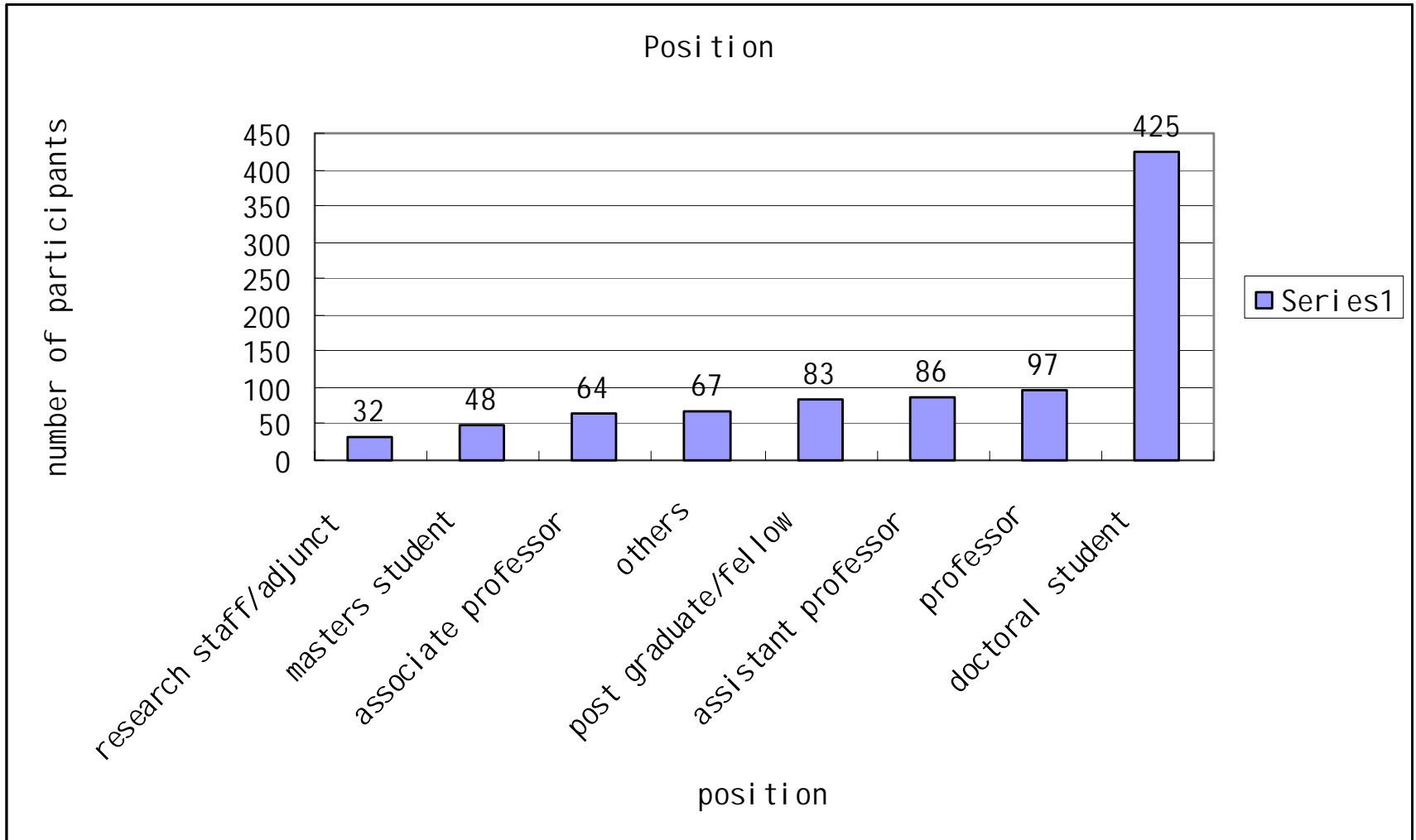


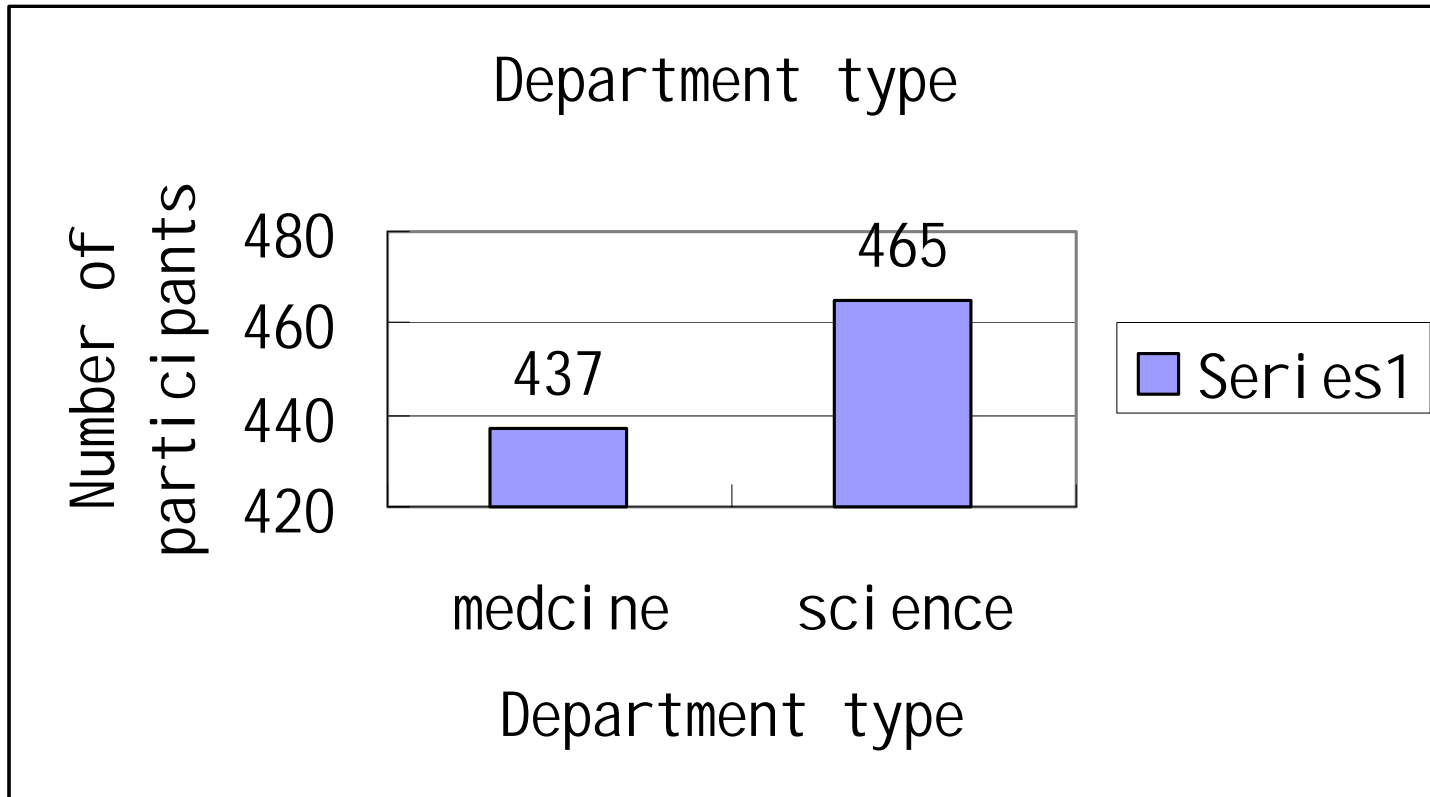
ISB survey result 2005

Dihui Lu

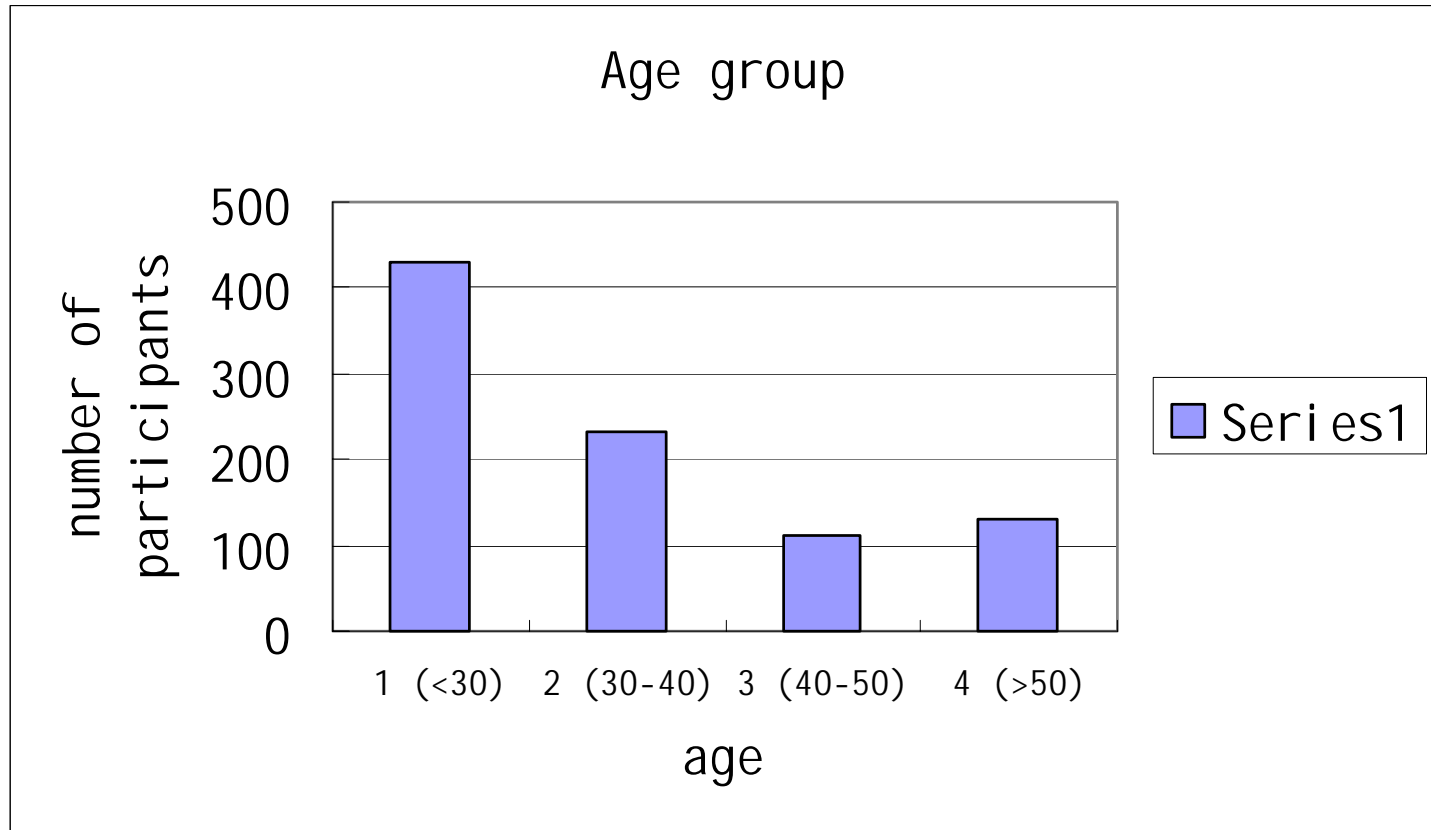
Q4: what is your position?



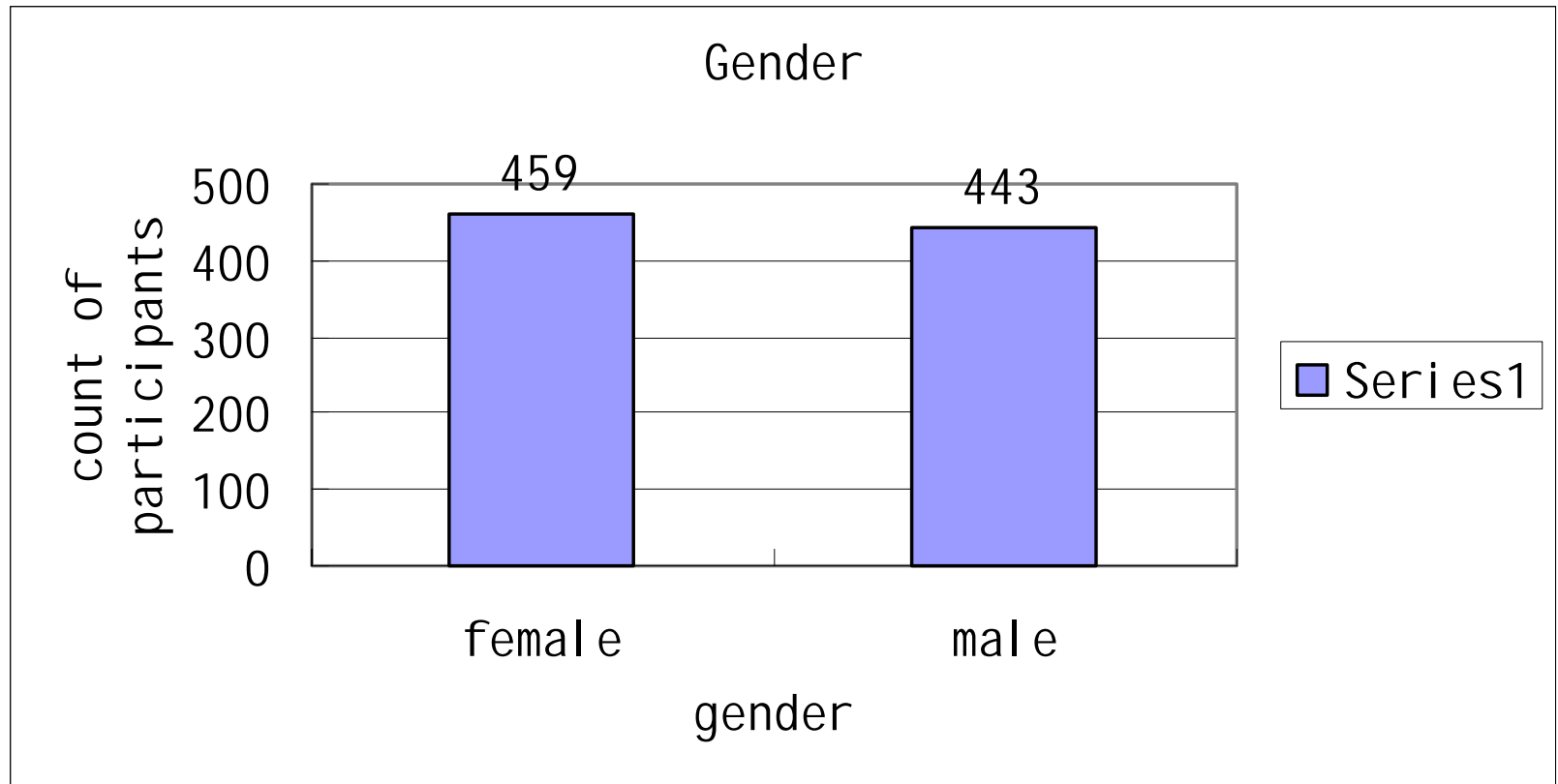
Department type



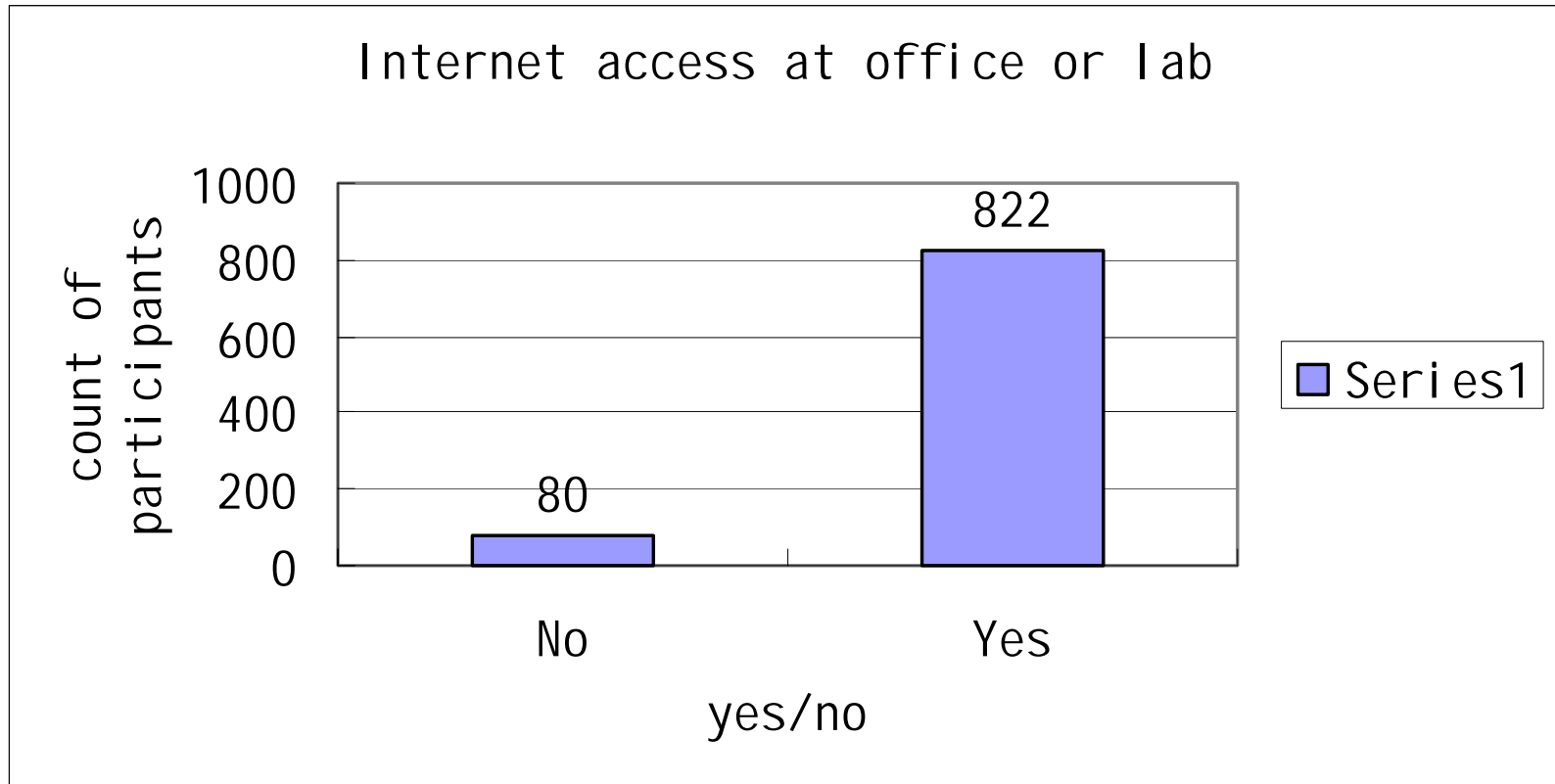
Q5: participants age group



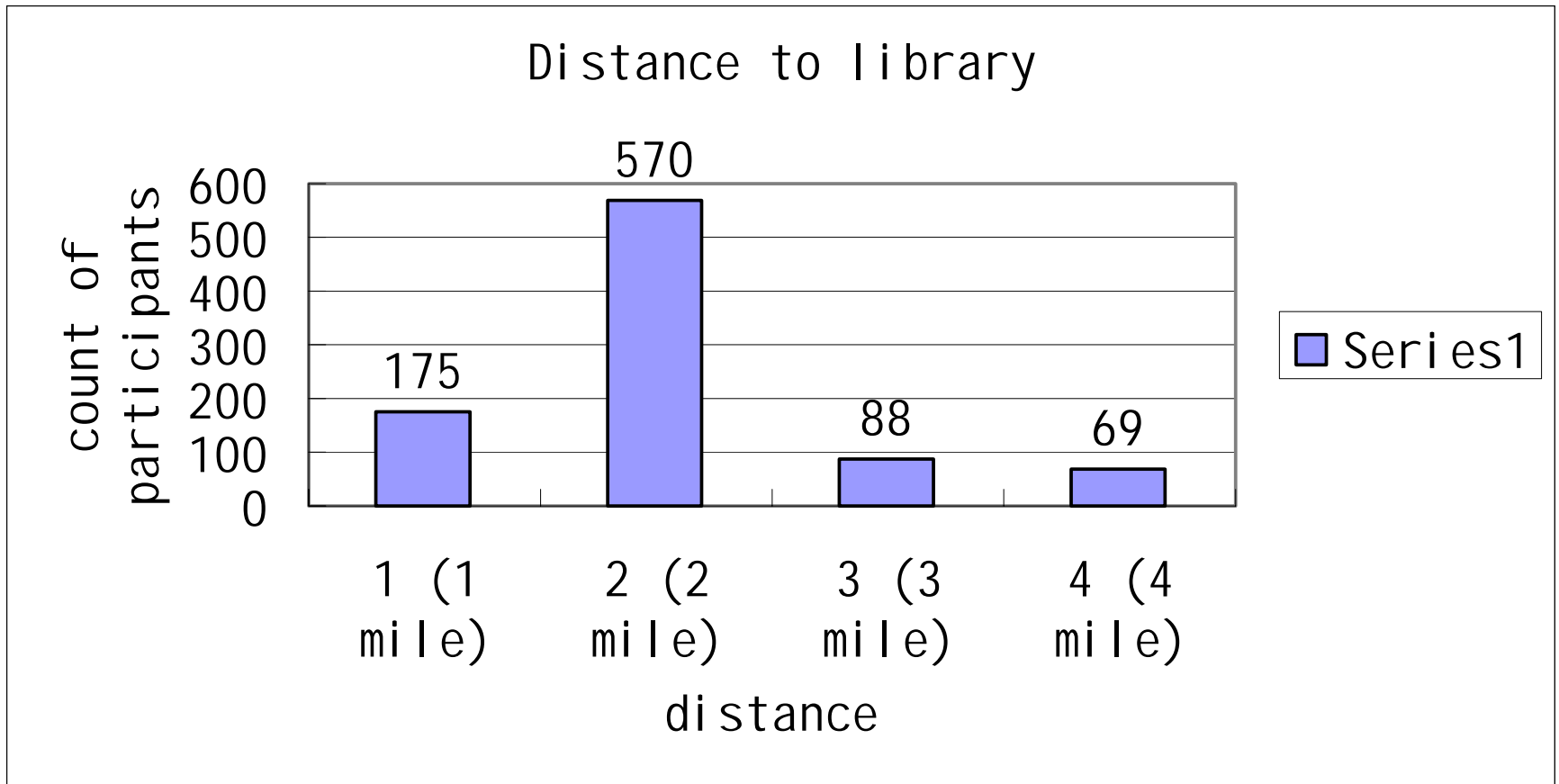
Q6: Gender



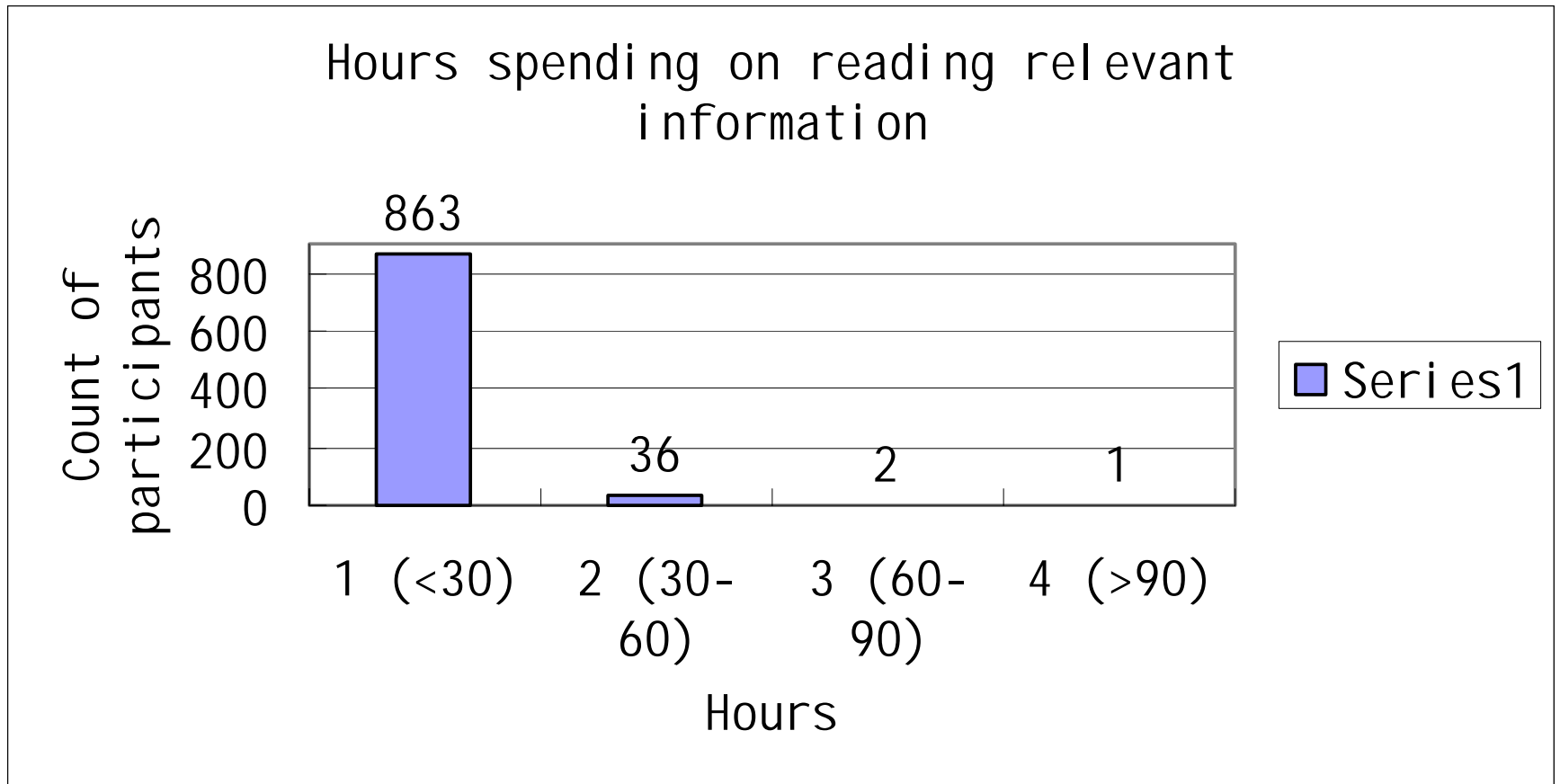
Q7: Internet access at office or lab



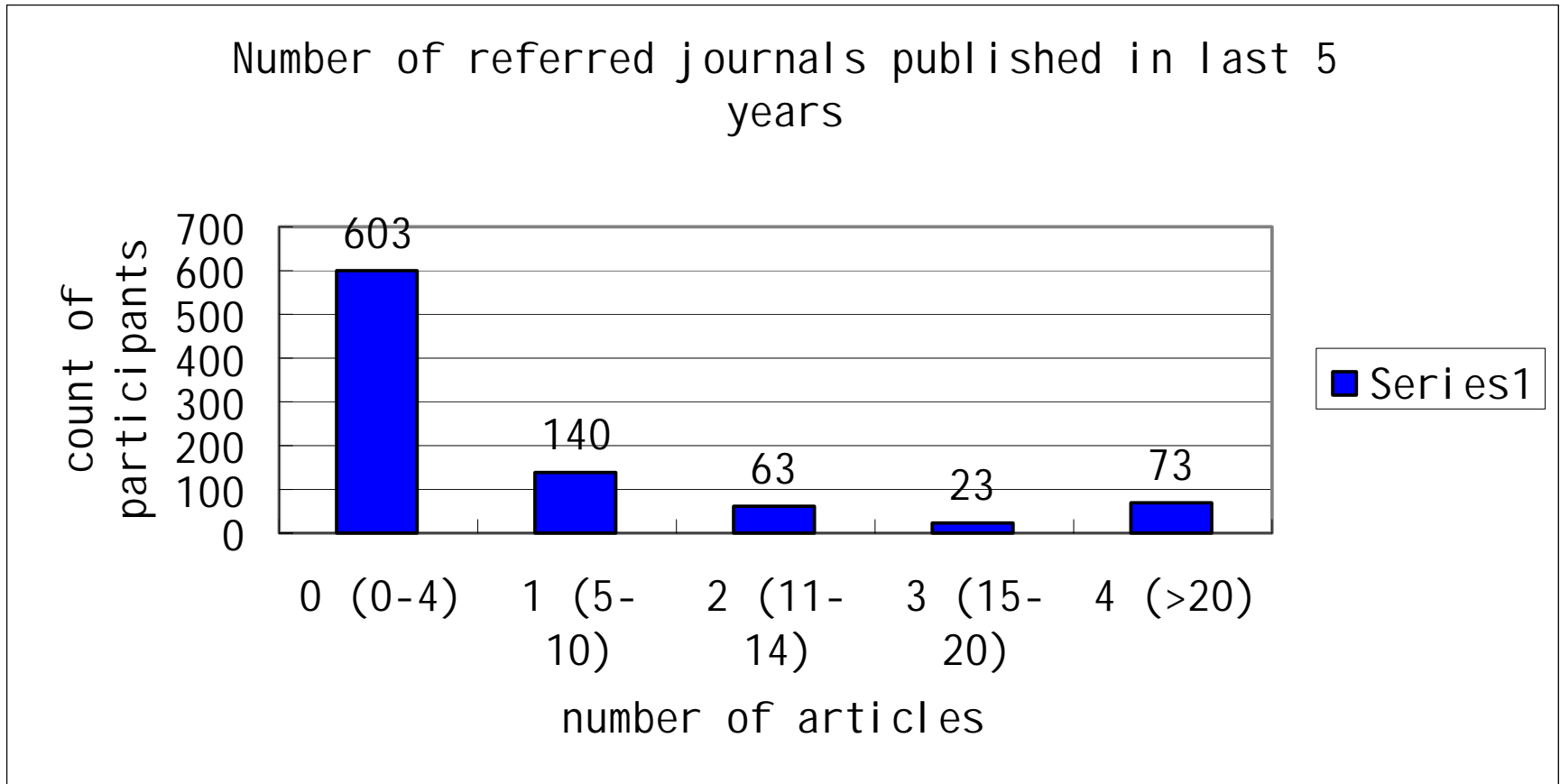
Q8: Distance to library



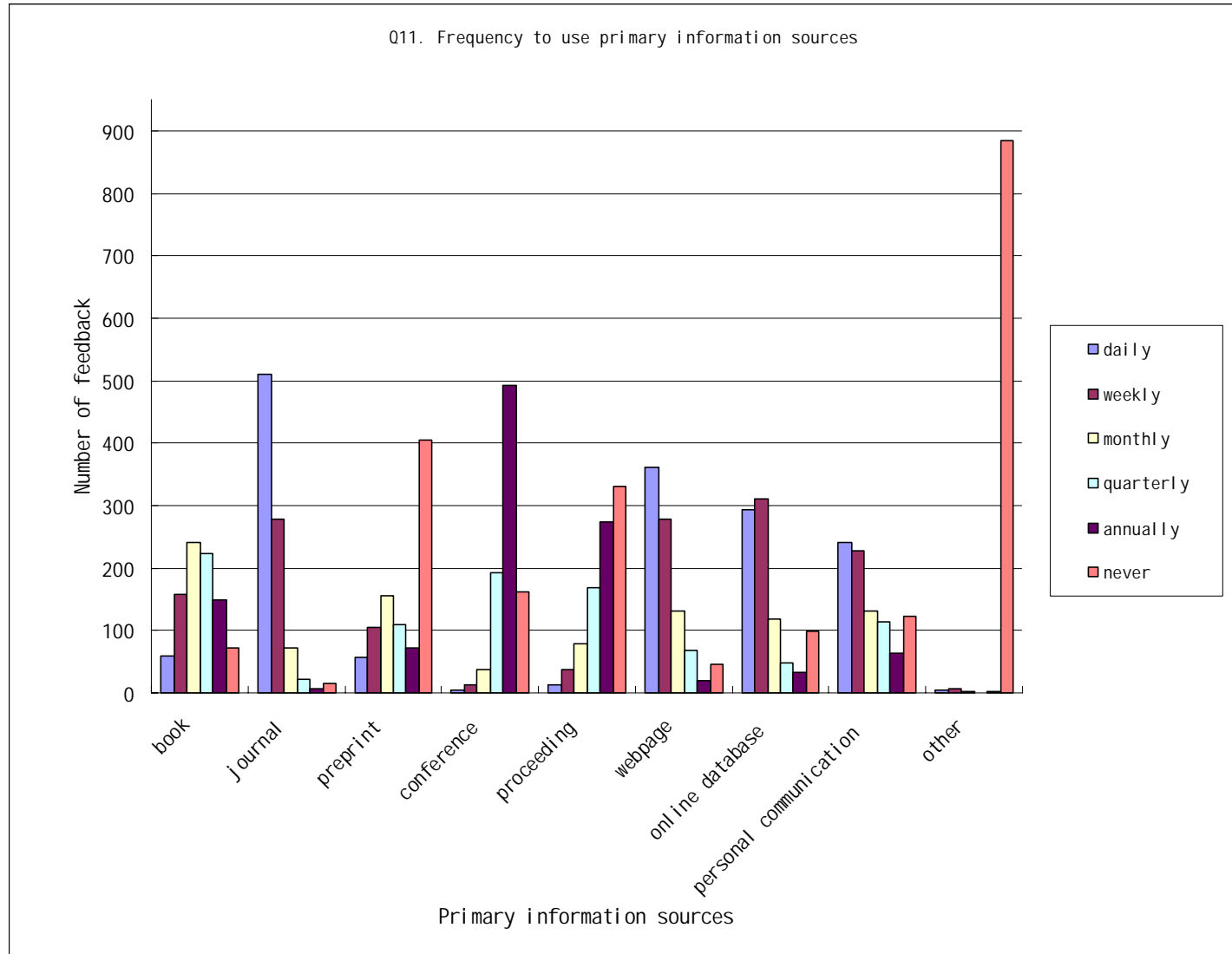
Q9: Hours spending on reading relevant information



Q10: Number of referred journals published in last 5 years



Q11: How often do you use the following primary sources?



Q12: Ranking of top 5 individual sources (type)

src_type	count1	count2	count3	count4	count5	count	score
Journal, proceeding and preprint	598	570	462	353	270	2253	7632
Website, blog and wiki	42	76	78	64	31	291	907
Bibliographic database	154	50	54	10	19	287	1171
Book, manual and notes	3	9	29	32	5	78	207
Fulltext digital library	32	26	7	8	1	74	302
Personal communication	7	11	22	16	14	70	191
Online database and database	11	33	10	3	5	62	228
Website search engine	13	16	7	.	4	40	154
Conference, meeting and seminar	1	10	7	3	6	27	78
Others	.	1	3	1	.	5	15
Traditional media	.	3	.	.	1	4	13
Library collection	.	.	.	2	.	2	4

Q13: Ranking of 5 top alerts (top 30)

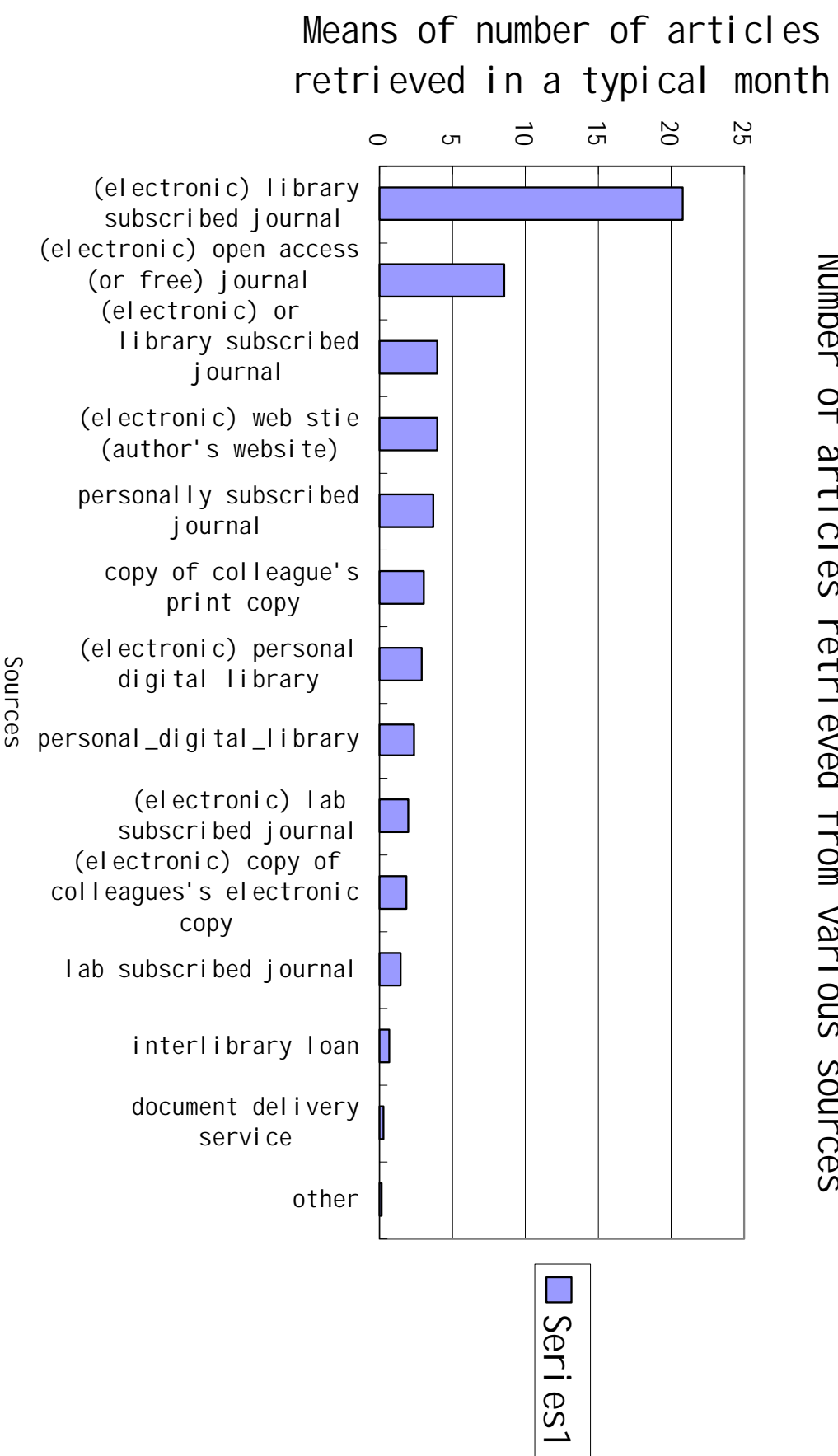
alert_name	count1	count2	count3	count4	count5	count	score
PubMed alert	72	9	5	.	1	87	412
eTOC	30	6	2	.	.	38	180
Faculty of 1000	23	10	2	1	.	36	163
none	24	1	.	.	.	25	124
ISI personal alert	11	8	1	.	.	20	90
PubCrawler	11	2	.	.	.	13	63
Nature alert	7	2	6	.	.	15	61
Medscape	3	2	3	.	.	8	32
Science Direct alert	.	8	.	.	.	8	32
Science alert	.	5	2	1	1	9	29
ACS alert	5	5	25
Journal alert	2	2	1	.	.	5	21
Biomail	4	4	20
Science Direct	4	4	20
JBC alert	2	1	1	.	.	4	17
Epocrates	3	3	15
BioMed Central alert	.	3	.	1	.	4	14
ASHP	2	.	1	.	.	3	13
PNAS alert	1	1	1	.	.	3	12
Amedeo	2	2	10
American chemical society alert	2	2	10
EndoLinx	2	2	10
Medline	2	2	10
Reference Update	2	2	10
Science TOC	2	2	10
Nature eTOC	.	2	.	.	1	3	9
J Neuroscience eTOC	.	2	.	.	.	2	8
Journal eTOC	.	2	.	.	.	2	8
"Molecular Vision" email updates	1	1	5

Q14: Ranking of top 5 search tools types

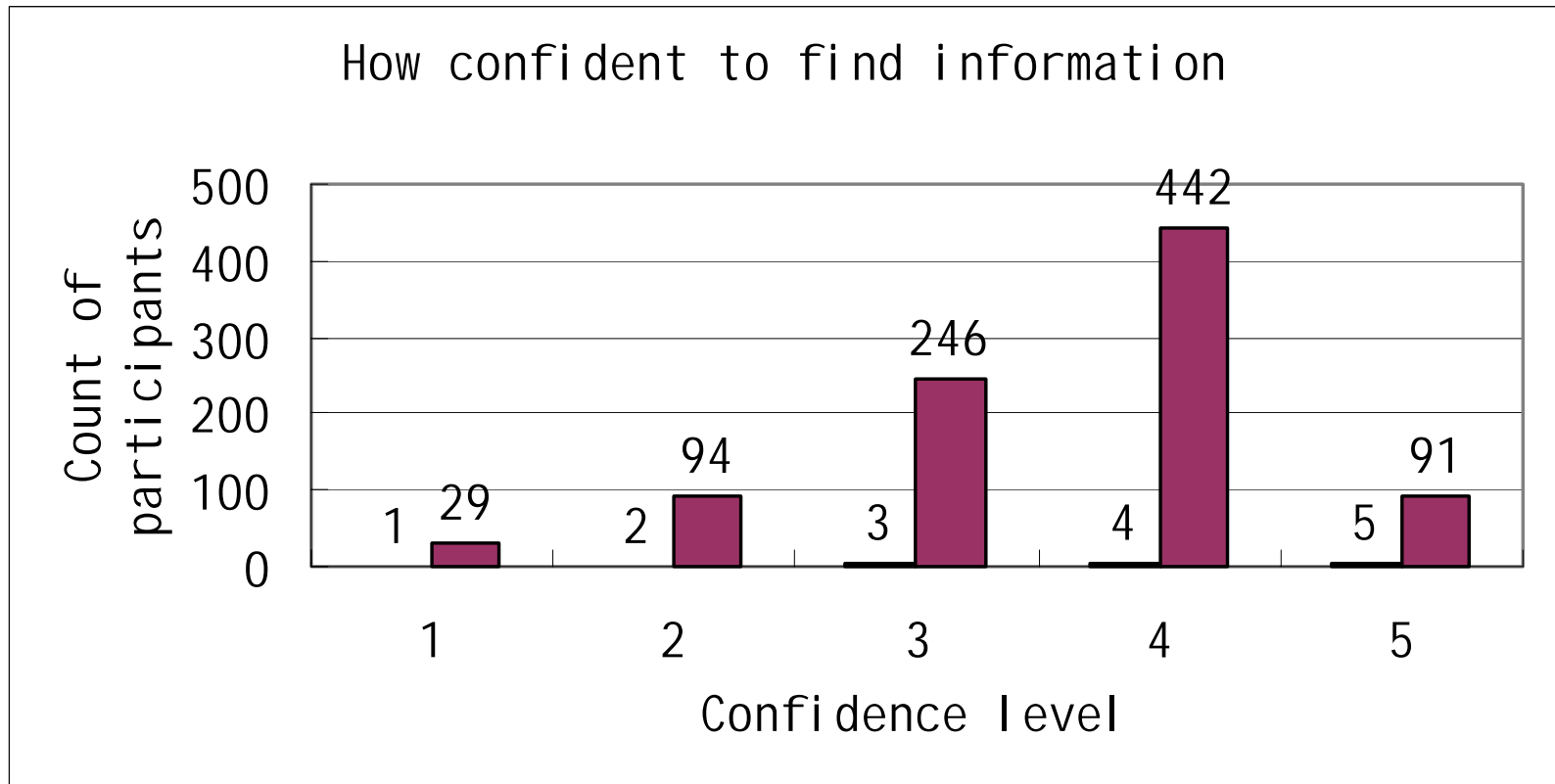
tool_type	count1	count2	count3	count4	count5	count	score
Citation index database	603	248	173	53	7	1084	4639
General web search engine	157	362	134	34	7	694	2710
Fulltext digital library	73	48	26	7	2	156	651
Personal search tool	14	24	57	25	5	125	392
Knowledgebase web portal	20	36	18	13	6	93	330
Others	4	20	12	21	12	69	190
Online database and datab	9	21	16	5	1	52	188
Library collection	2	3	13	1	2	21	65
dummyval uetodefi necol umnw	.	.	.	1	1	2	3

Q15: Number of articles retrieved from various sources

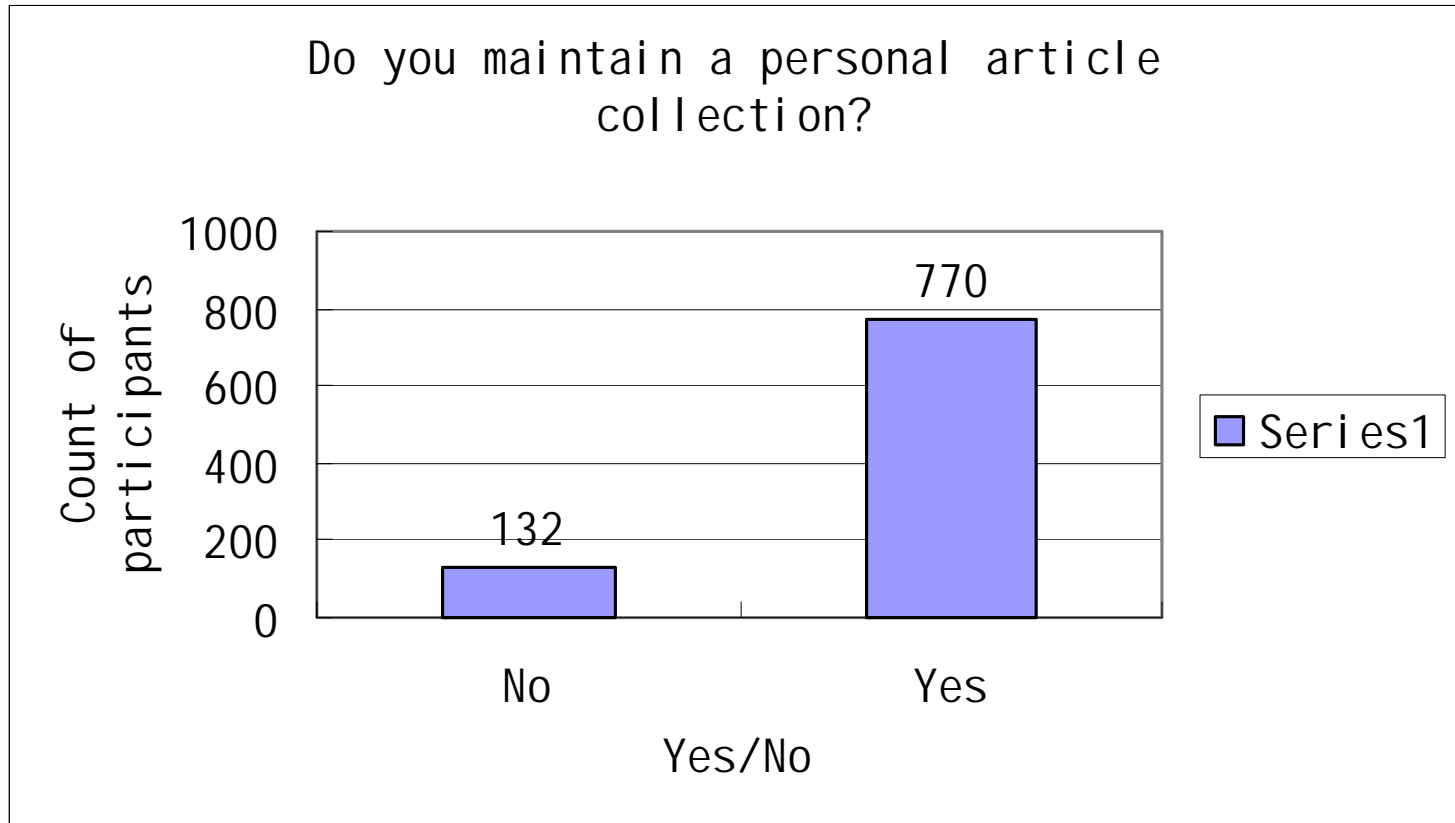
Number of articles retrieved from various sources



Q16: How confident are you that you are finding everything you should on your topic?



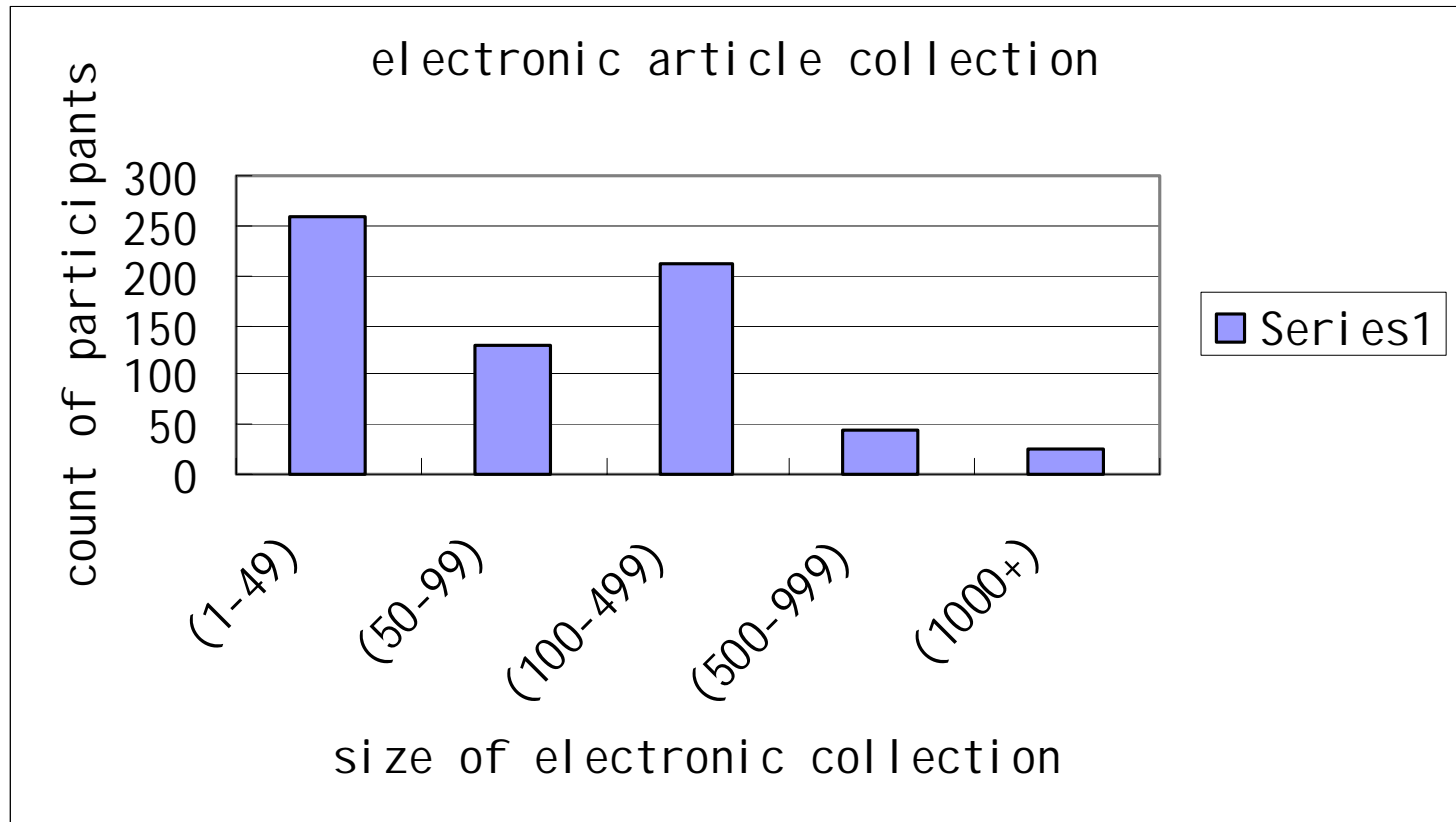
Q17.Do you maintain a personal article collection?



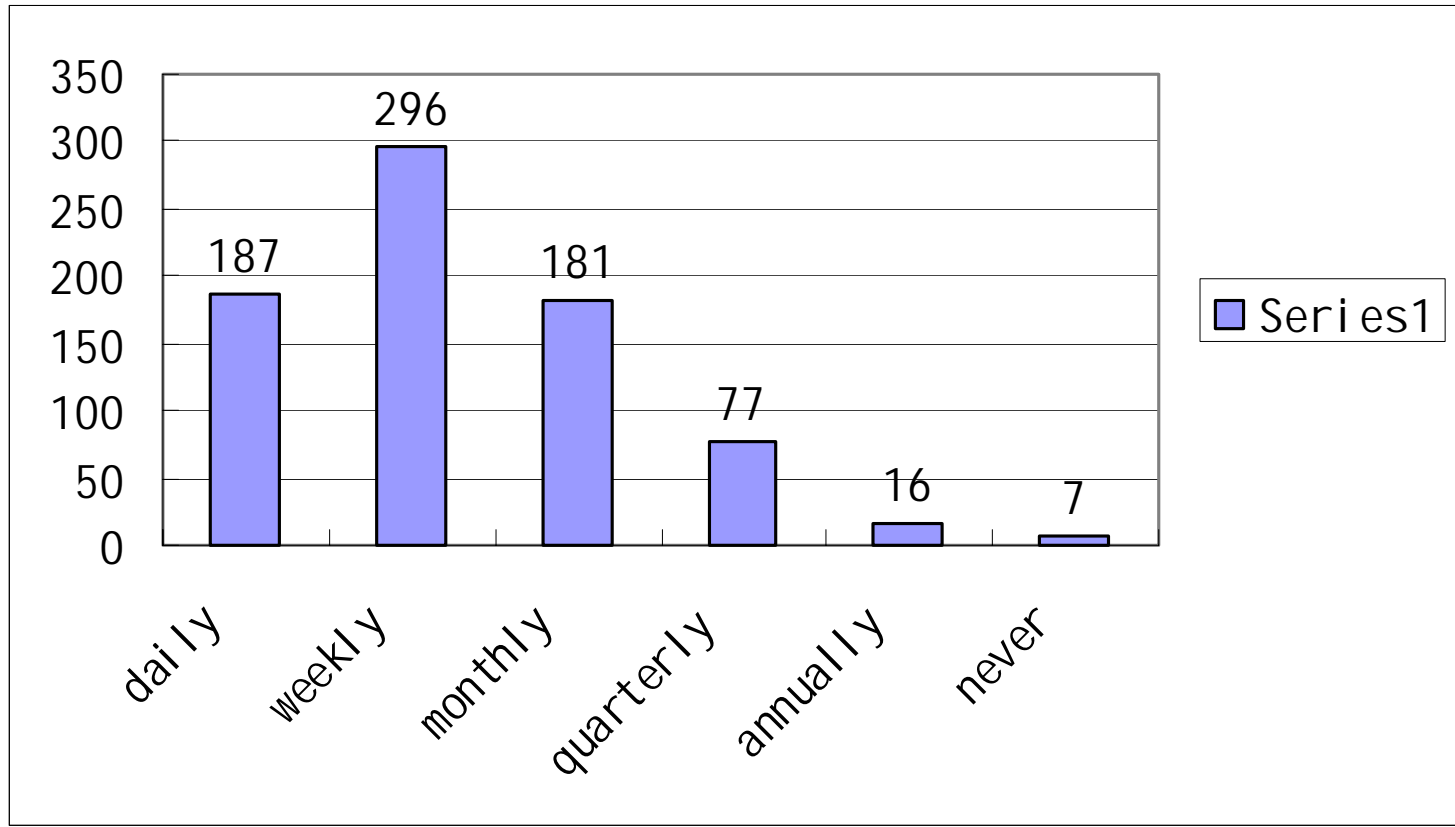
Q17.1: print collection



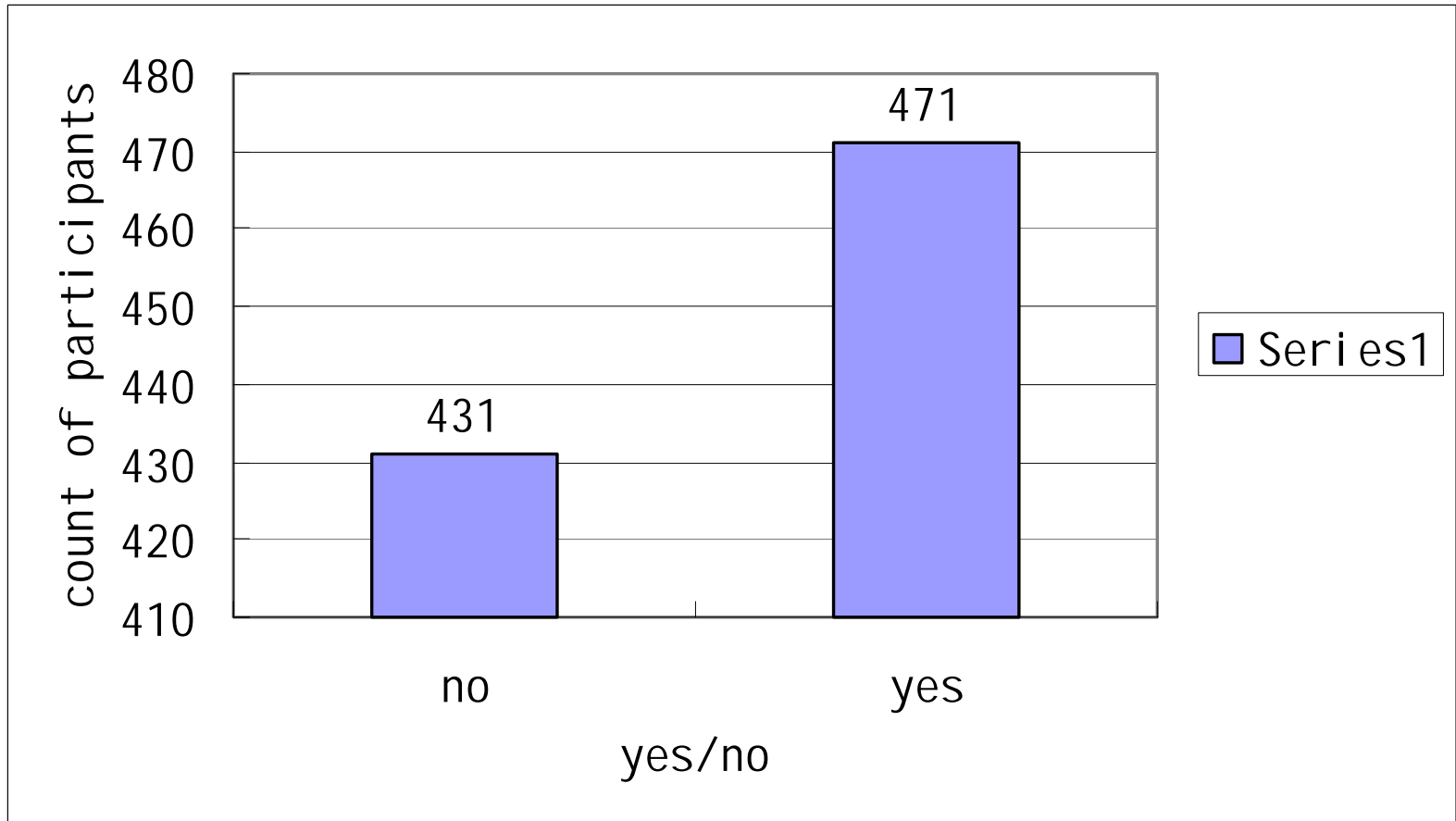
Q17.2: electronic collection



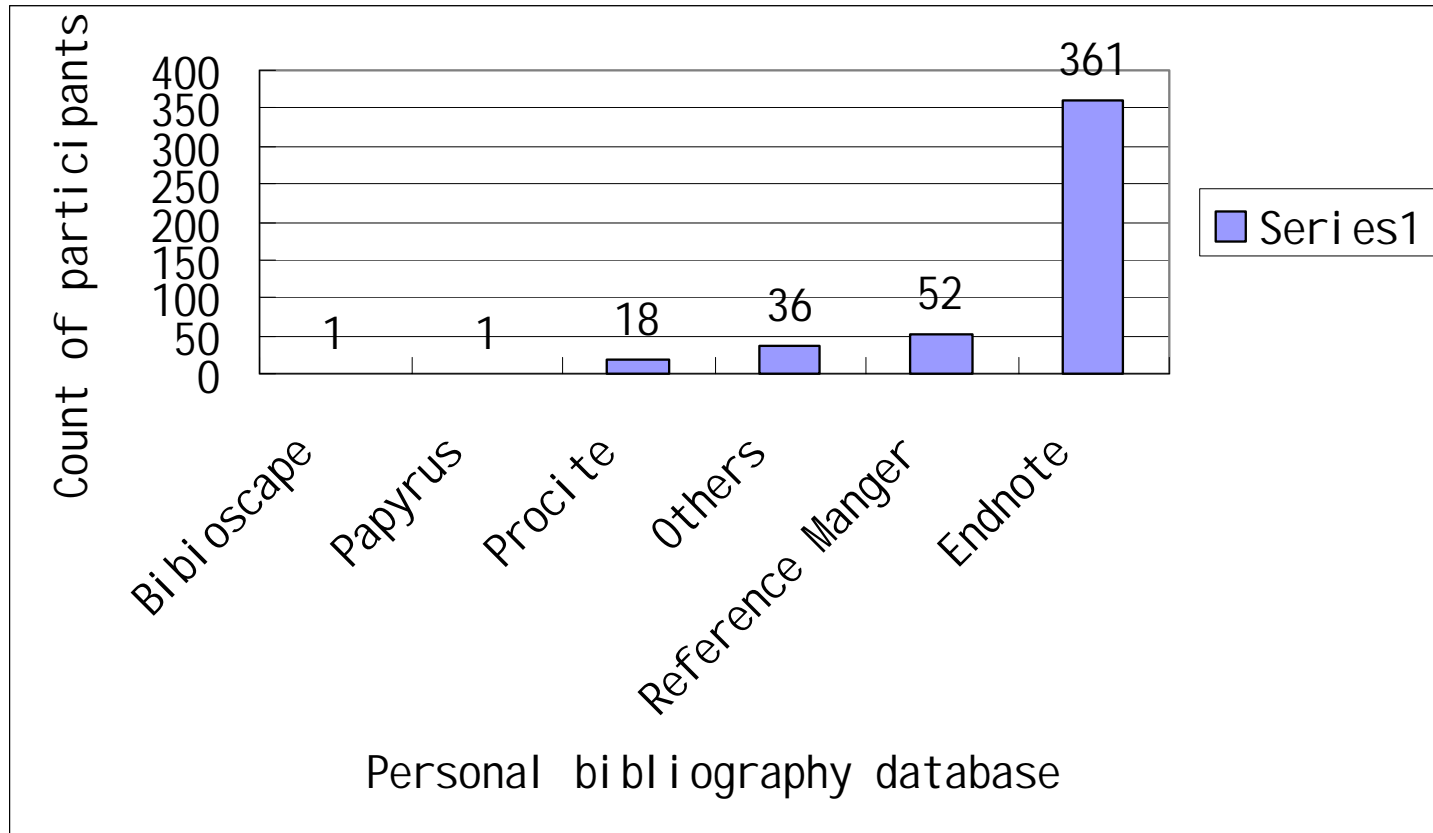
Q17.3: How often to use personal collection



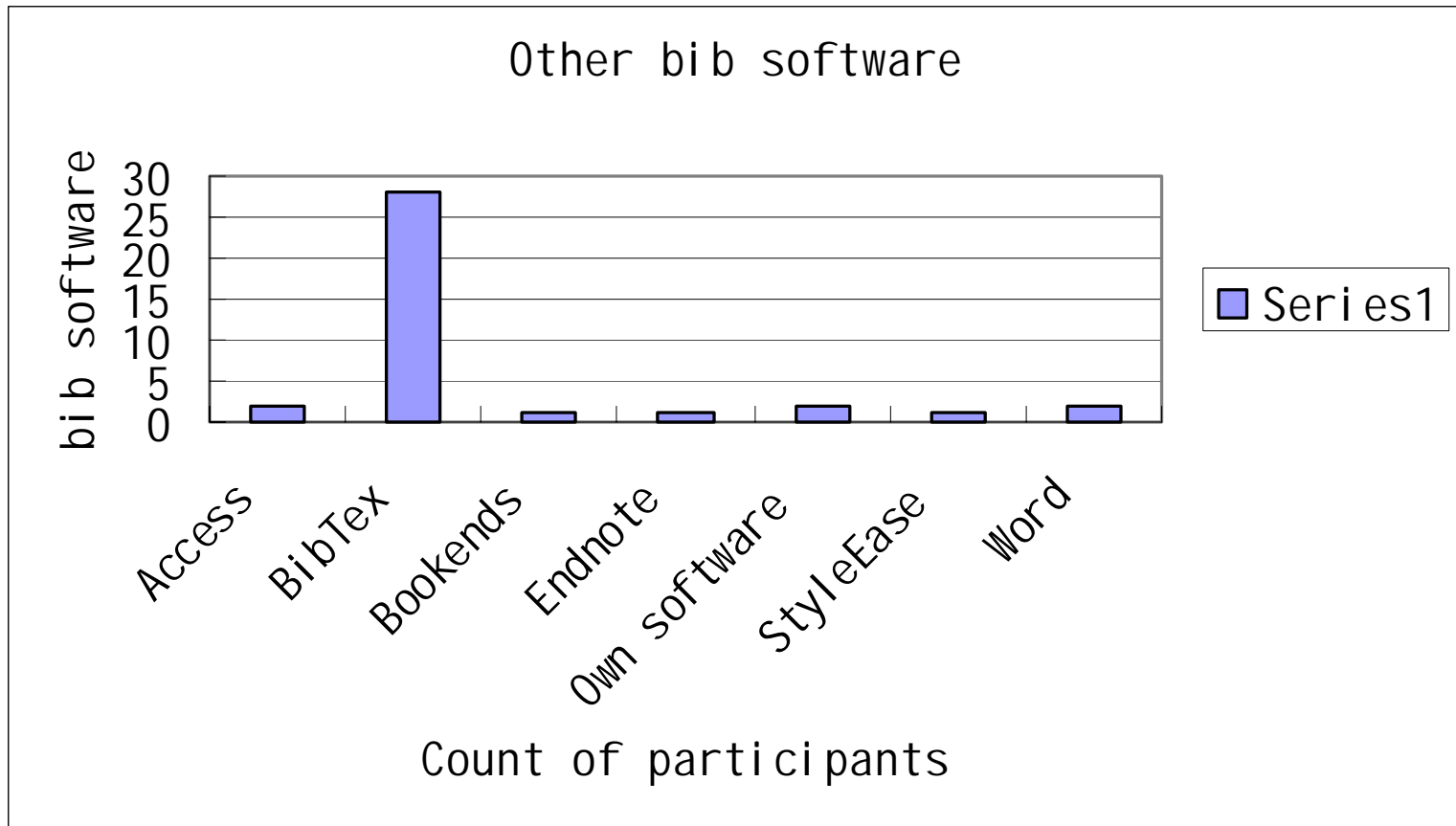
Q18: Use of personal bibliography database



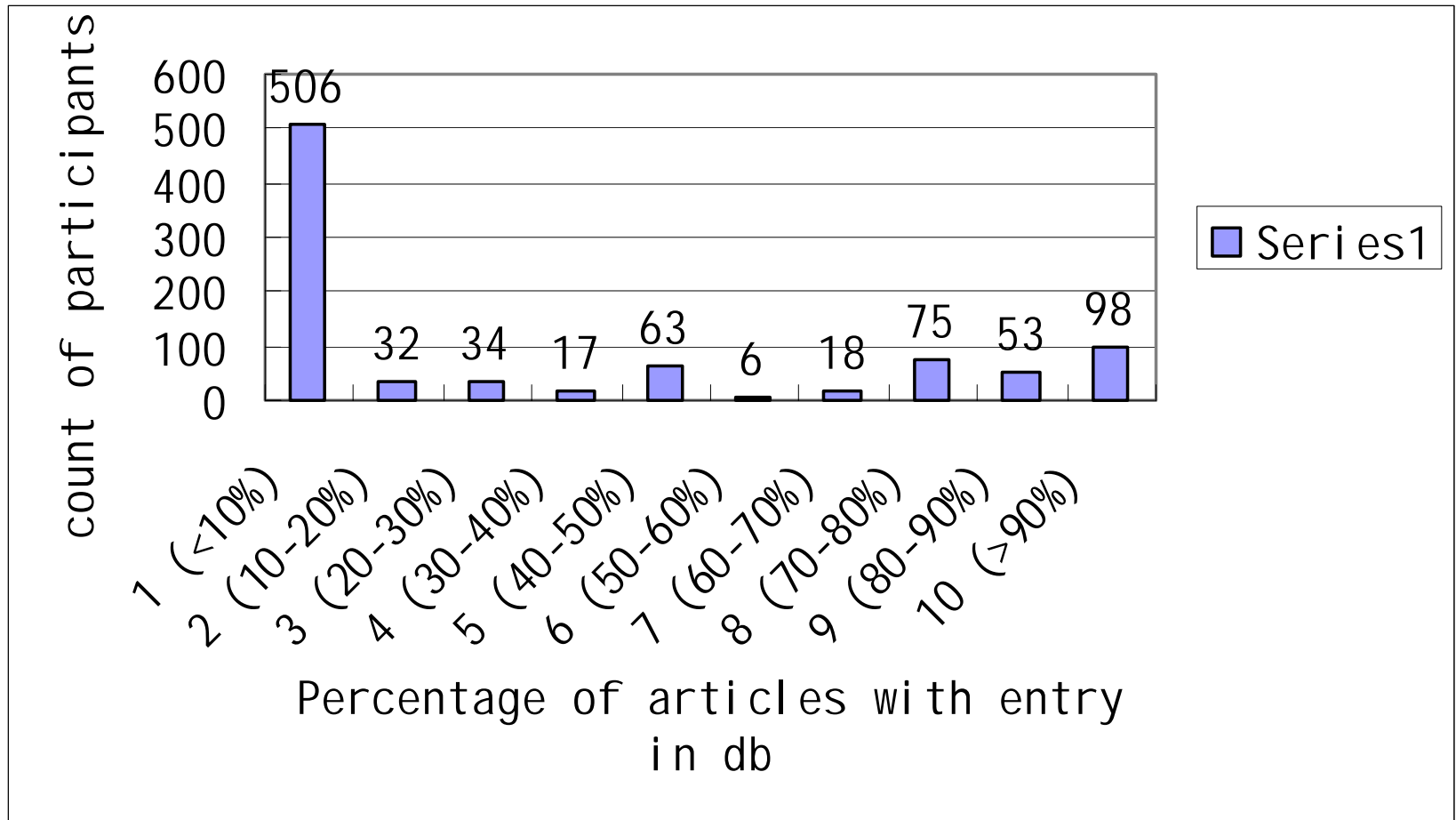
Q18.1 Which software to use?



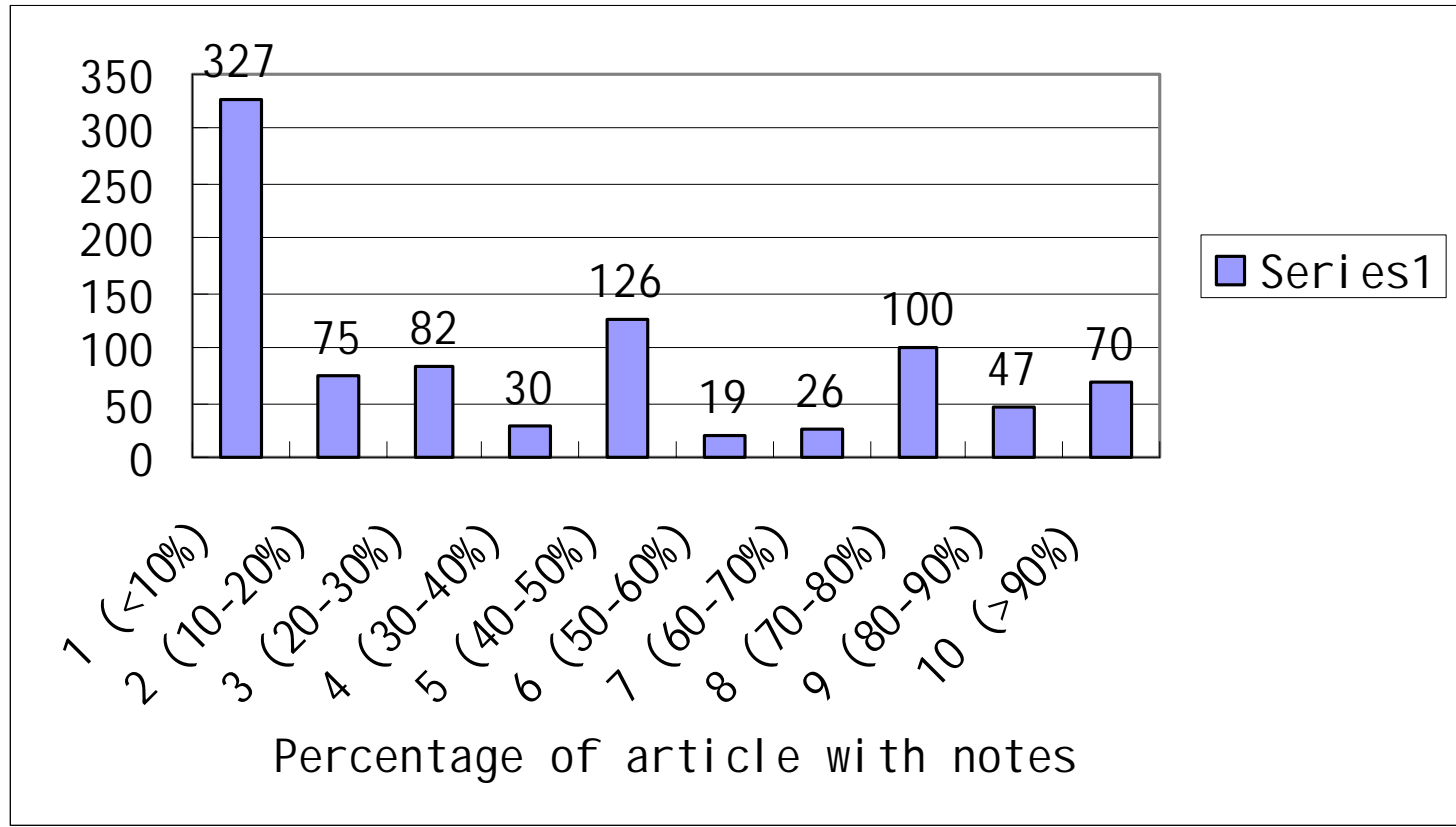
Q18.2 Other bib software



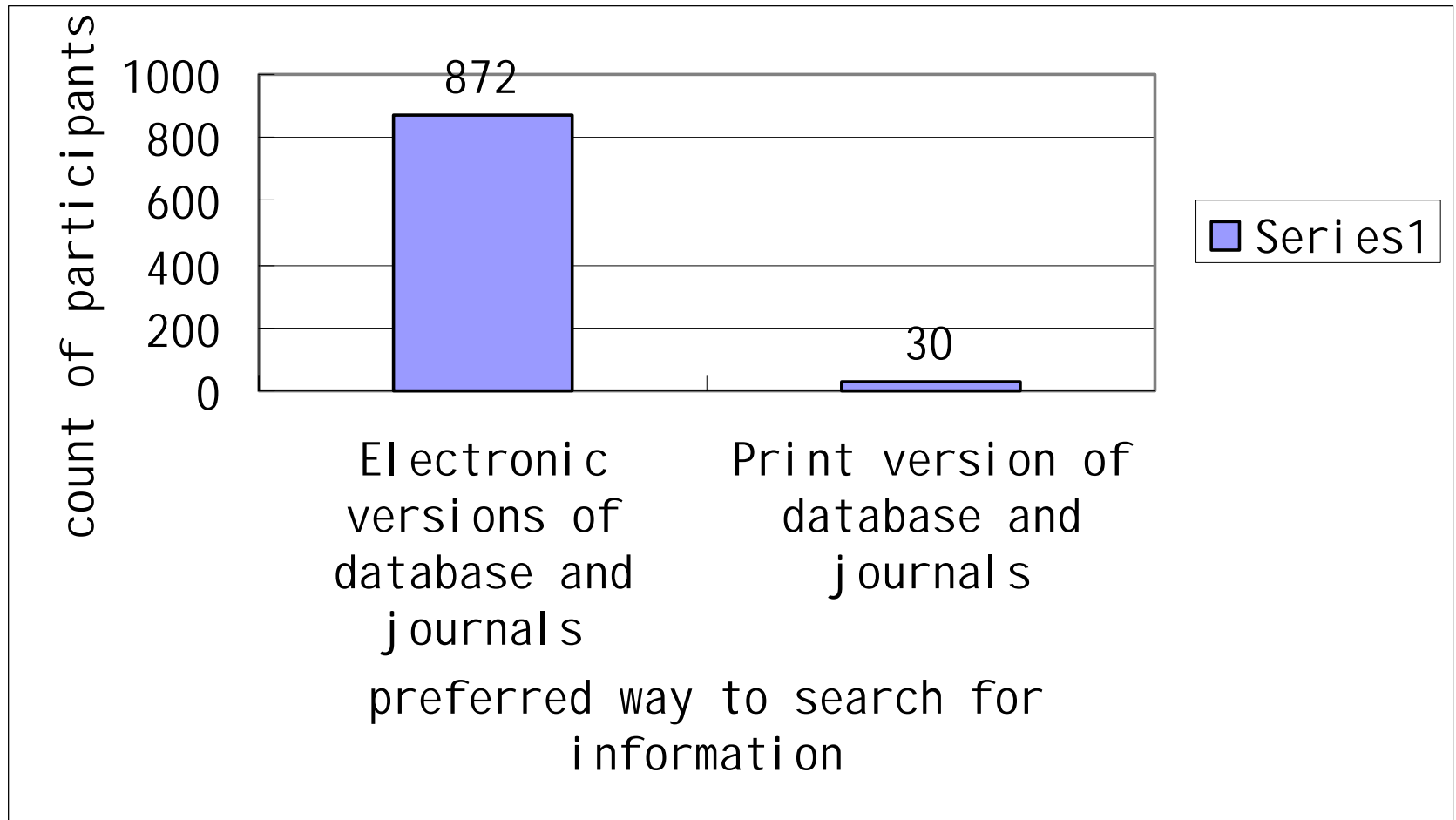
Q19.1 Percentage of articles with entry in personal bib db



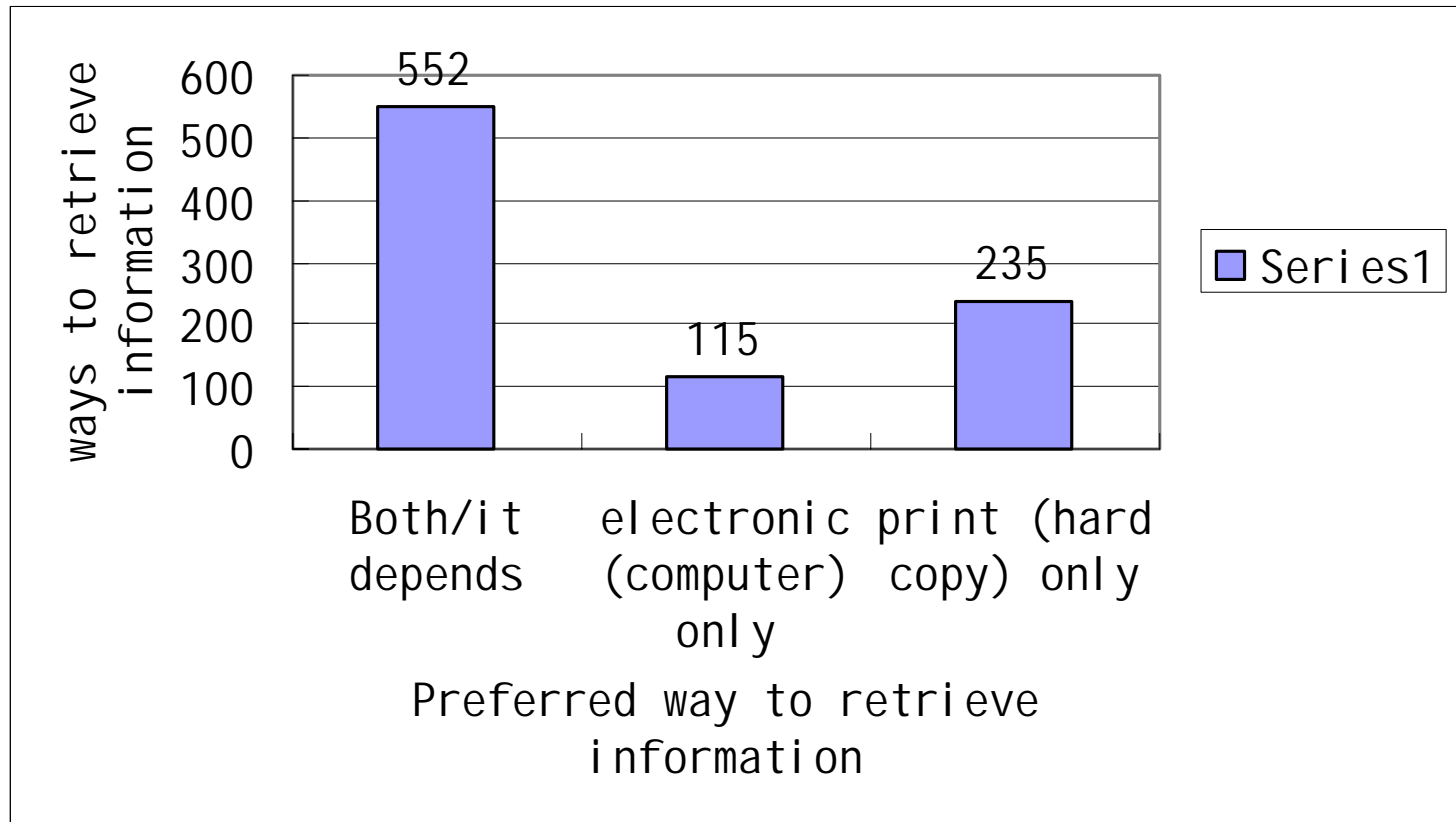
Q19.2 Percentage of articles with notes



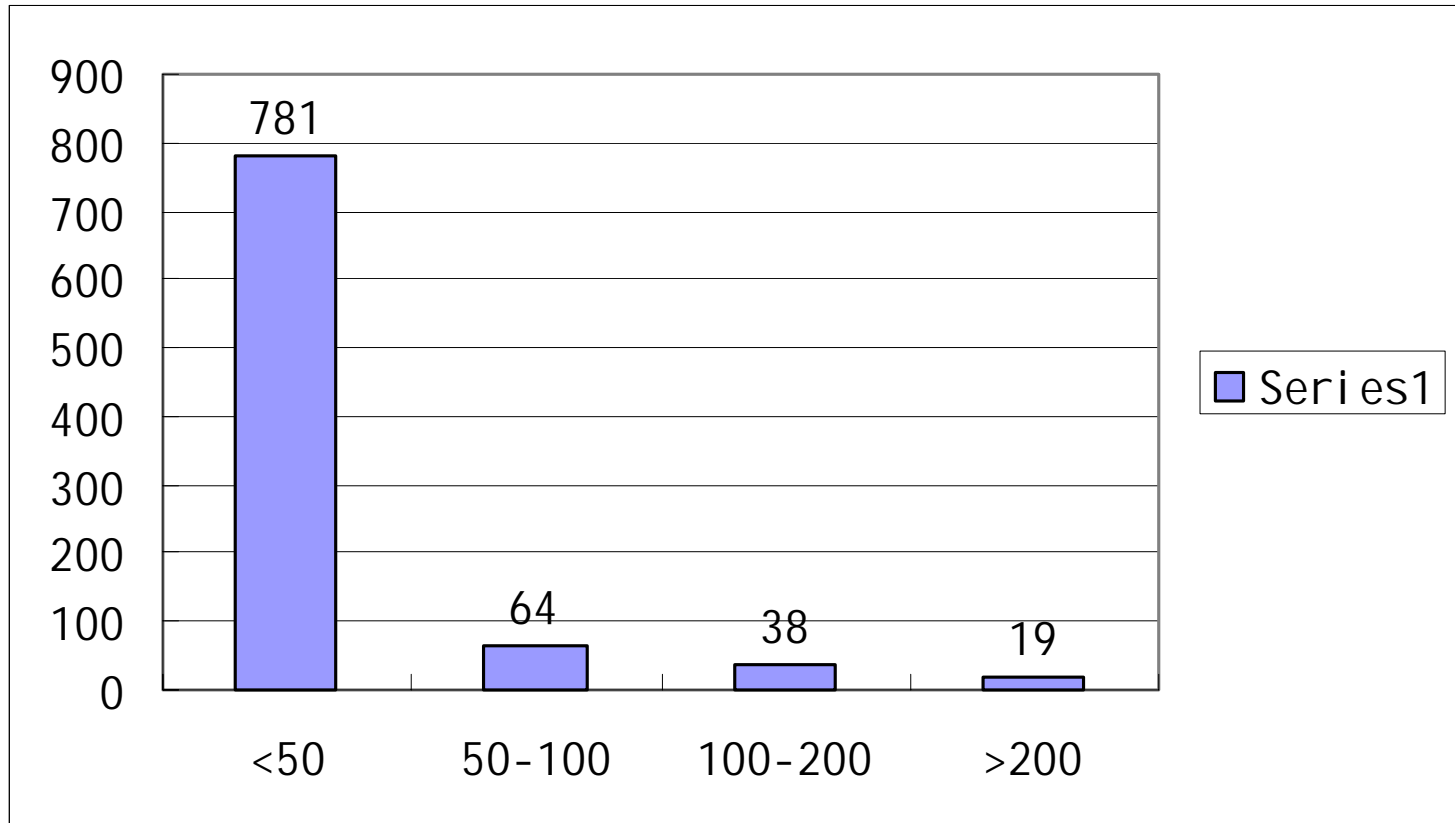
Q20. Preferred way to search for information



Q21. Preferred way to retrieve information

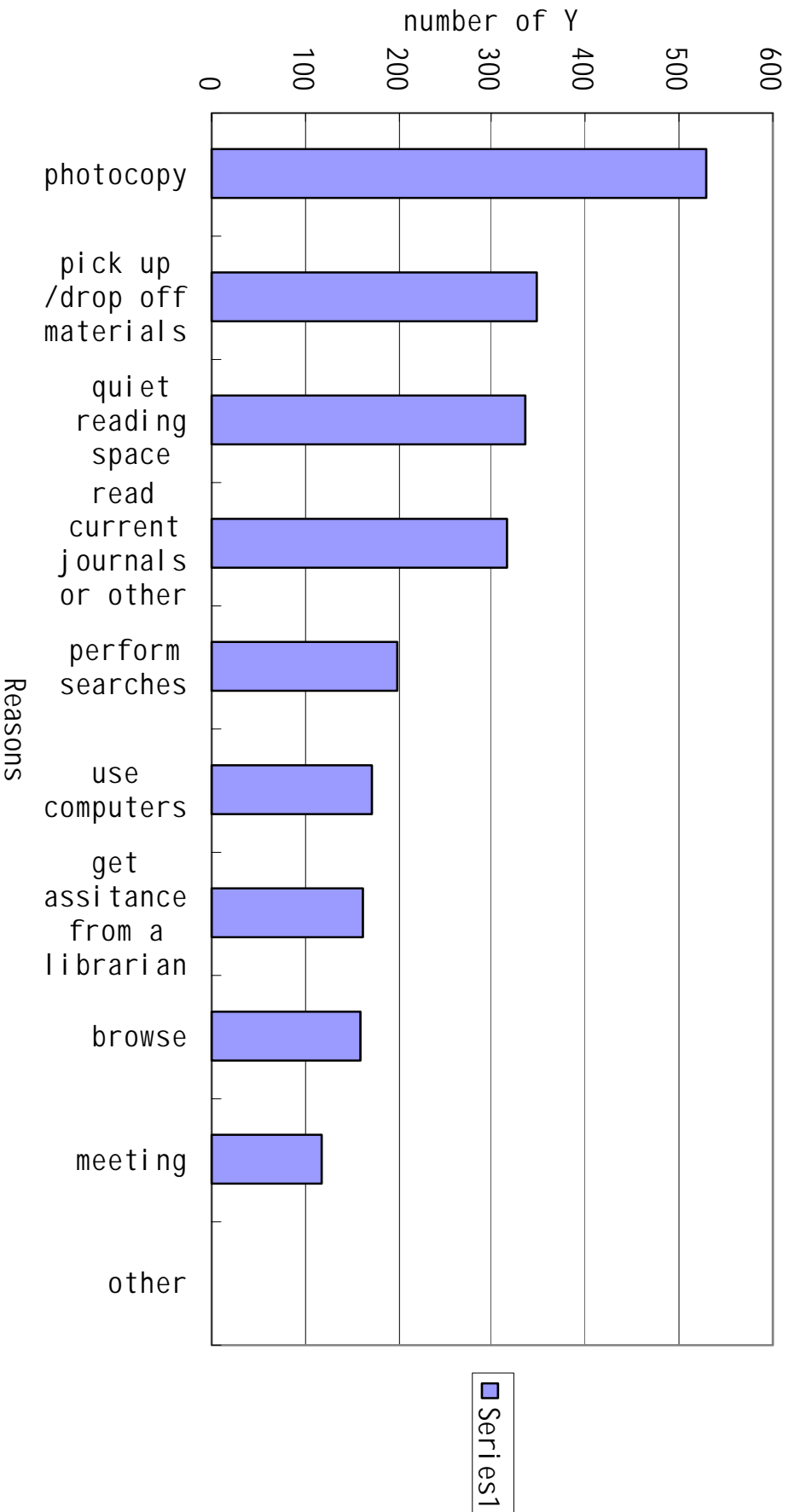


Q22: How often visit library in last 12 months



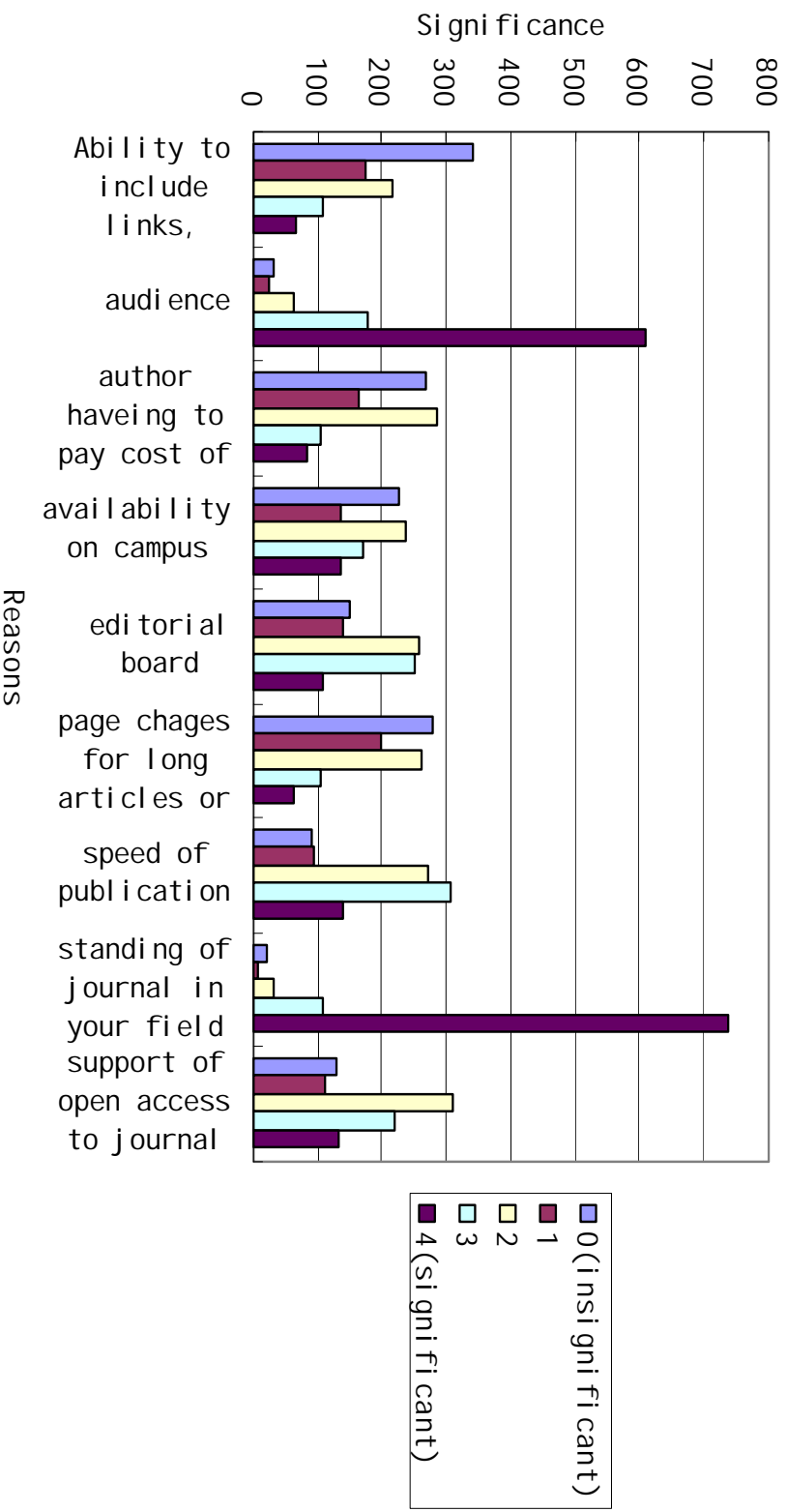
Q23: Ranking of reasons to visit library

Reasons to visit library

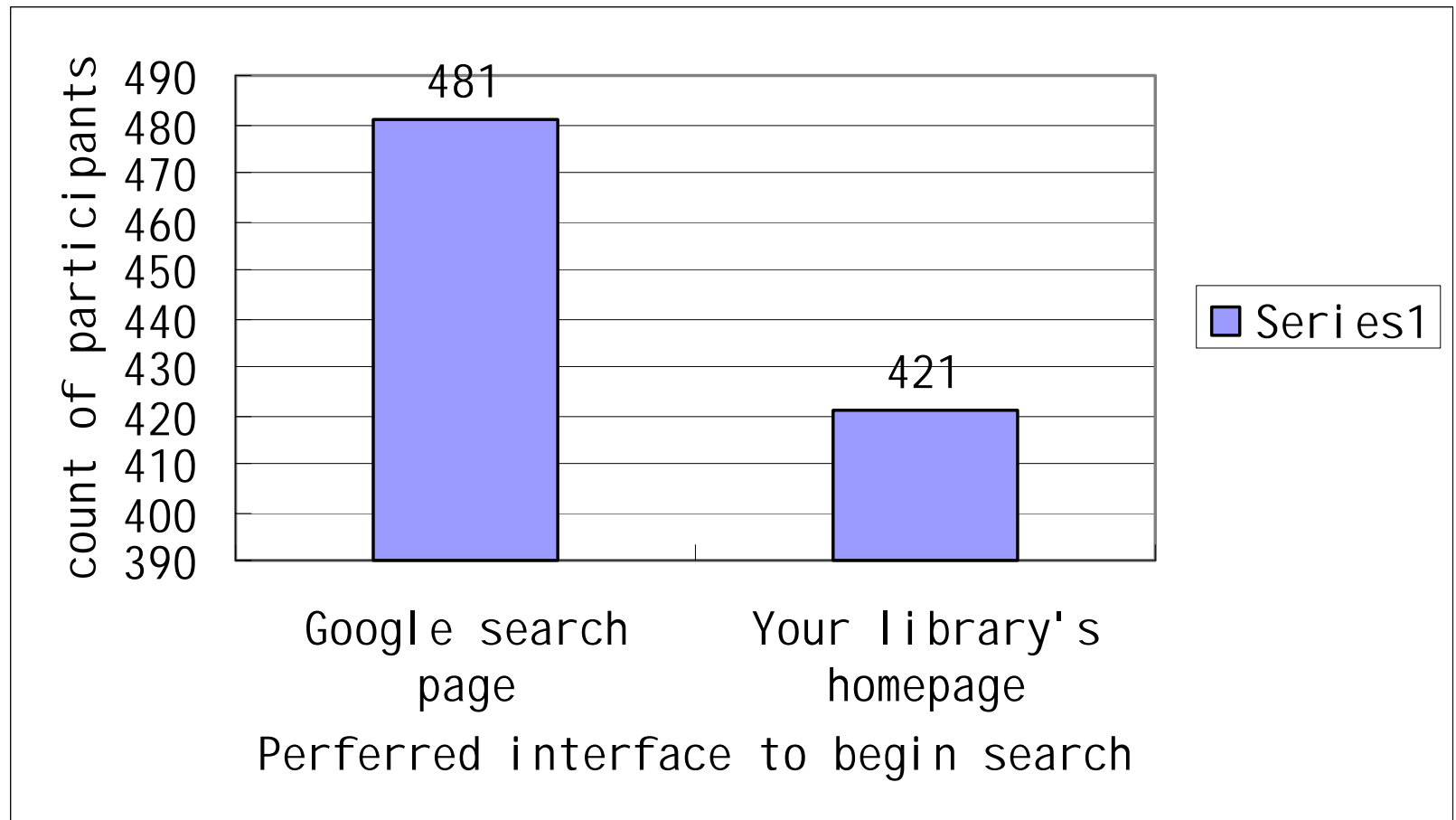


Q24: Choice of publication

Choice of journal for publication



Q25: Interface to begin the search



ANNOVA analysis (Scimed)

iv	v13 (hours_reading)	v74 (percent_entry_db)	v75 (percent_entry_note)	v78 (how_ofTEN_visit_library)
v1 (dept)	0.000187235	0.724210029	0.010397858	1.57287E-22
dept_type	8.55385E-05	0.532864334	0.309706731	0.785601553
v4 (position)	0.024133001	0.041573222	2.61626E-12	7.58538E-07
v7 (gender)	0.190812998	0.402452247	1.63748E-06	0.032041053
v8 (internet_access_office)	0.019429278	0.43558067	0.091635386	0.142638303
v10 (internet_access_home)	0.187315599	0.8065342	0.407139735	0.004399708
v12 (dist_library)	0.071126201	0.64563625	0.554954434	0.015948731
v14 (num_referred_journal)	0.033011448	0.75165778	2.57472E-06	0.000265403
v66 (confidence_find)	0.712668942	0.247419566	0.079764491	0.566150606
v67 (personal_article_collection)	0.070137597	0.009127556	3.33673E-15	0.478264671
v68 (size_print_collection)	4.6676E-06	0.095502421	0.002207746	0.053104399
v69 (size_elec_collection)	8.53901E-07	0.502052988	0.027299416	0.455774787
v76 (preferred_way_search)	0.308094554	0.579838733	0.549646499	0.201217905
v77 (preferred_way_retrieve)	0.458302953	0.804257739	0.433880362	0.835316061
v98 (interface_for_search)	0.804809042	0.610900394	0.571222722	0.000346382

ANNOVA: dept vs. numeric

iv	v13	v74	v75	v78
v1 (dept)	0.000187	0.72421	0.010398	1.57E-22