

SCALING UP TO DO DATA

MANAGING CROSS-DISCIPLINARY INTER-INSTITUTIONAL DATA IN THE DATAVERSE NETWORK™

Thu-Mai Christian < tlchristian@unc.edu > | Jonathan Crabtree < jonathan_crabtree@unc.edu > | Sophia Lafferty-Hess < slafler@live.unc.edu > • Odum Institute, University of North Carolina at Chapel Hill
Tim Bucknall < bucknall@uncg.edu > | Lynda Kellam < lmkellam@uncg.edu > • University of North Carolina at Greensboro

ABSTRACT

Data management has become a much discussed issue due to recent mandates issued by major funding agencies such as the NSF and the NEH, which requires grant proposals to include **Data Management Plans**. These requirements have forced researchers and the institutions supporting them to seek tools and services to manage the vast amounts of research data being generated each day. Though technological advances have enabled researchers to produce unprecedented amounts of data that give answers to novel research questions, these advances have also made **data management tasks increasingly complex**. The **Odum Institute's implementation of the Dataverse Network™** has proven to be a viable option for handling the challenges of research data management.

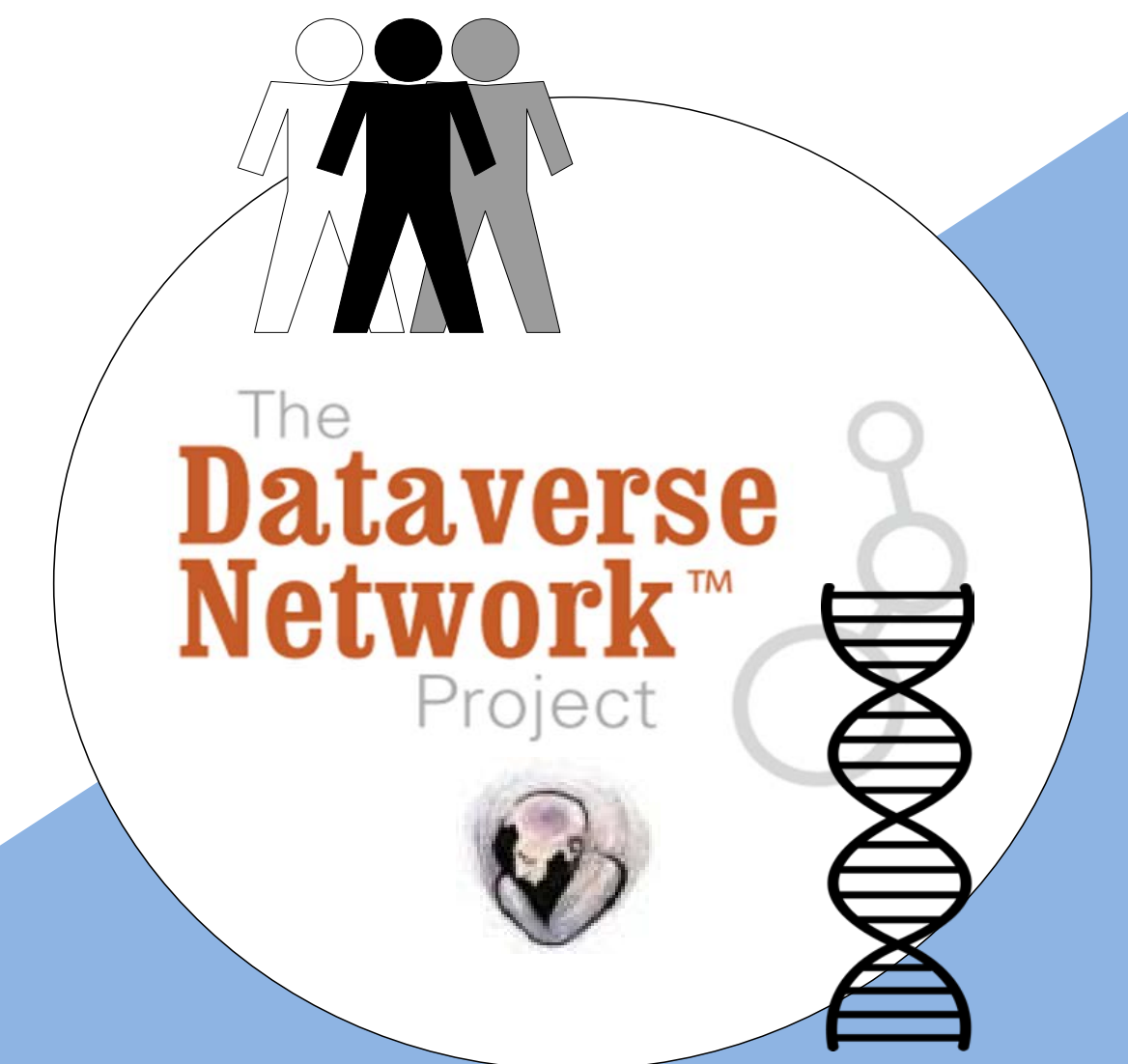
DATA MANAGEMENT CHALLENGES

- Funding agencies and publishers are placing **additional demands on researchers** for data sharing and access.
- Data-intensive science has enabled collaborative research that **crosses disciplinary and institutional boundaries**.
- Researchers **do not have access to or are unaware of tools and services** to help manage their data.

THE ODUM INSTITUTE DATAVERSE NETWORK™

The Odum Institute Dataverse Network™ (DVN) houses one of the oldest and largest collections of machine-readable social science data in the U.S. To meet the new challenges of today's research enterprise, the Odum Institute is **scaling up to do data** by:

- Ingesting **data produced as part of cross-disciplinary research projects** and investigating ways to apply metadata to these diverse data,
- Providing data **archiving infrastructure and support to inter-institutional organizations**, and
- Promoting the DVN as a solution for data management, access, and preservation on a **global scale**.



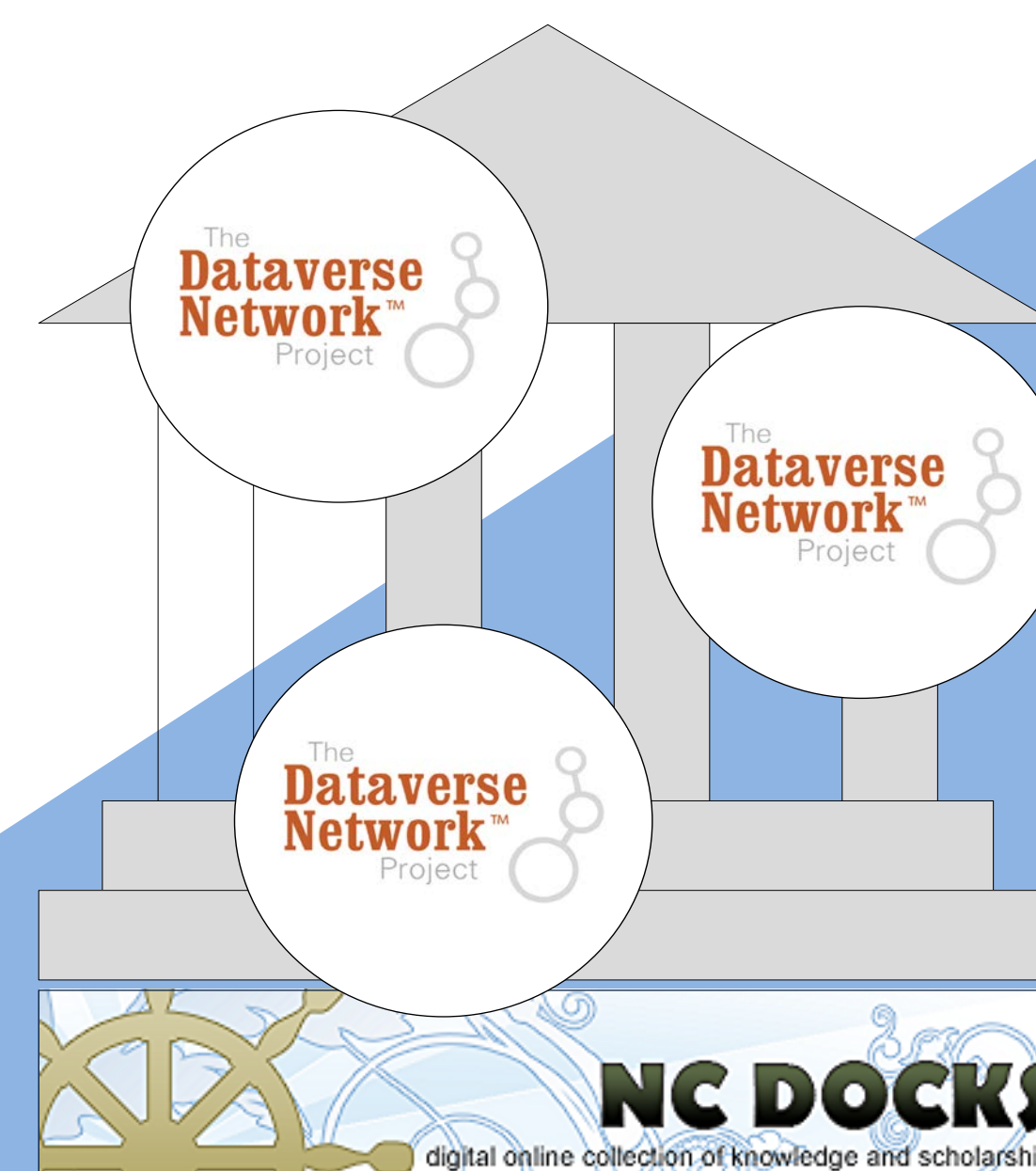
CROSS-DISCIPLINARY DATA

The NIH-funded Orofacial Pain: Prospective Evaluation and Risk Assessment (OPPERA) study has adopted the Odum Institute DVN to help **manage and share a combination of phenotype (i.e., survey) and genotype data** to fulfill the NIH sharing policy imposed on the data.



GLOBAL DATA

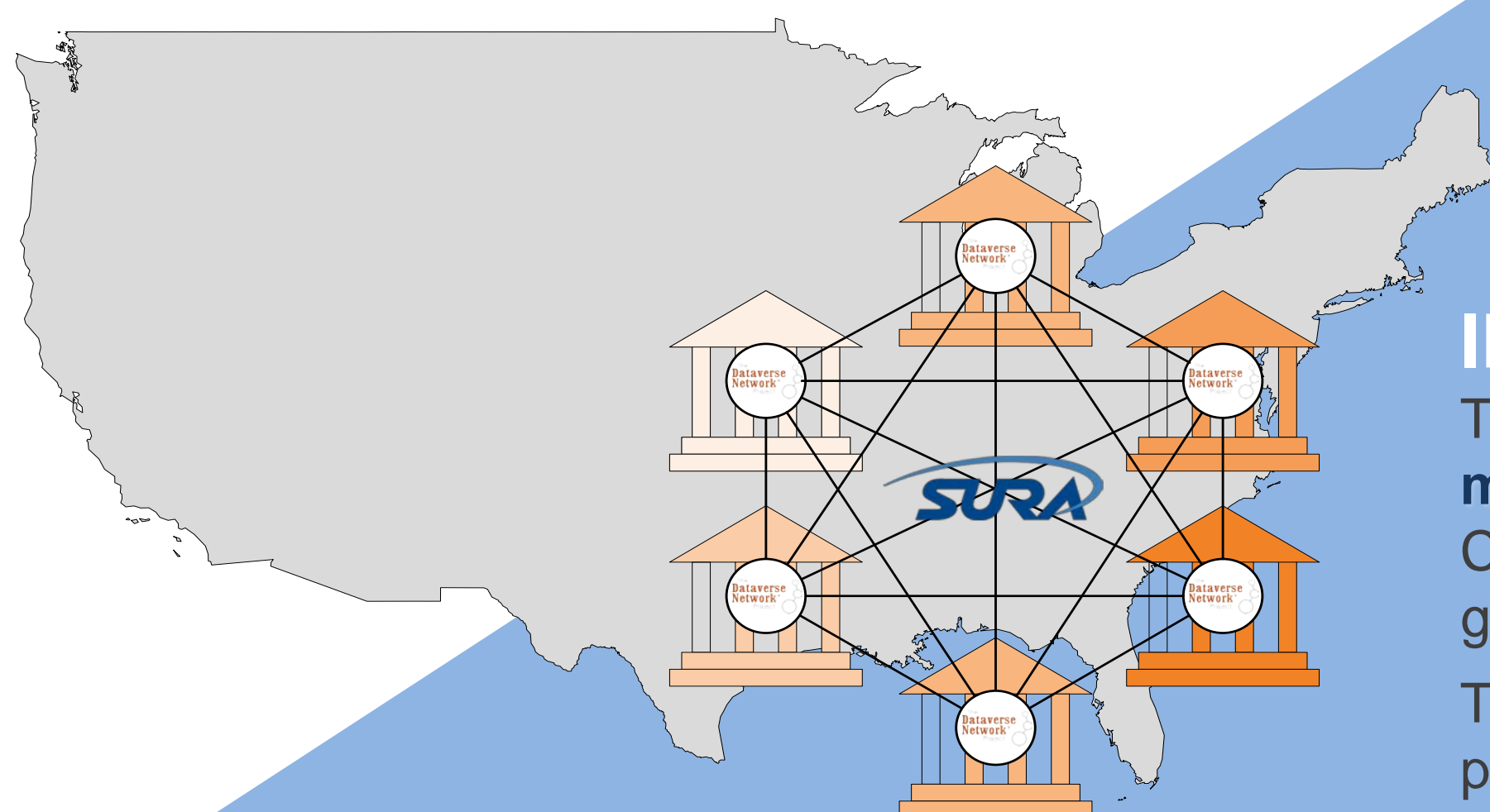
Dataverse Network™ instances exist in all corners of the globe and points in between. From Copenhagen to Thailand, the DVN supports a world of research data discovery and access.



INTER-INSTITUTIONAL DATA

The Odum Institute DVN provides a **centralized repository for data management** for seven UNC-system universities as part of the North Carolina Online Collection of Knowledge and Scholarship (NC DOCKS) group.

The Southeastern University Research Association (SURA) is currently piloting the DVN as their solution for **metadata federation to allow for discovery of data across a network of research universities**.



WHAT IS THE DATAVERSE NETWORK™?

The **Dataverse Network™** was developed by the institute of Quantitative Social Science (IQSS) at Harvard University as a web application for **sharing, citing, analyzing, and preserving research data**.

